

Werf Conrad
Haarlem Holland

A 1427 obl

TIN DREDGES

WERF CONRAD

ENGINEERS AND SHIPBUILDERS

HAARLEM

HOLLAND

TELEGRAMS: WERFCONRAD HAARLEM

CODES:

A. B. C. 5TH ED. — A. B. C. 6TH ED., 5-LETTER.
WESTERN UNION, 5-LETTER. — BENTLEY'S.
LIEBER'S - BROOMHALL'S IMPERIAL CODE.
— MOREING AND NEAL. —

REPRESENTATIVES:

JUAN P. BREDIUS,	BUENOS AIRES.
J. MASSALSKI,	PARIS.
MARINE WORKS LTD.,	LONDON.
NORMAN L. DAHL,	SYDNEY.
WERF CONRAD,	PENANG (F. M. S.)

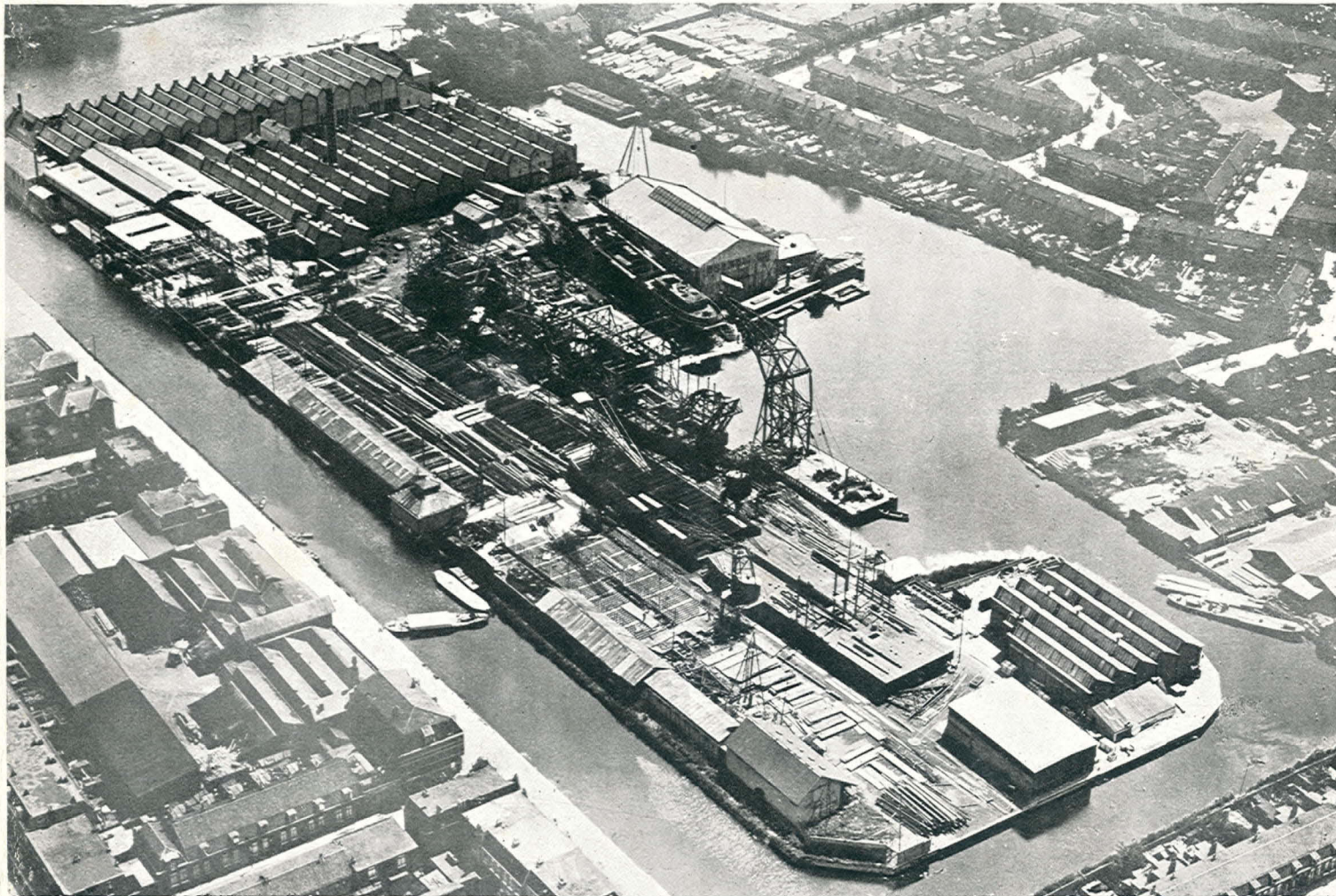
TELEGRAMS:

BREDIUS - BUENOSAIRE.
MASSALSKI - PARIS
DREDGCRAFT-AVE LONDON.
WERFCONRAD - SYDNEY.
WERFCONRAD - PENANG.

CODES:

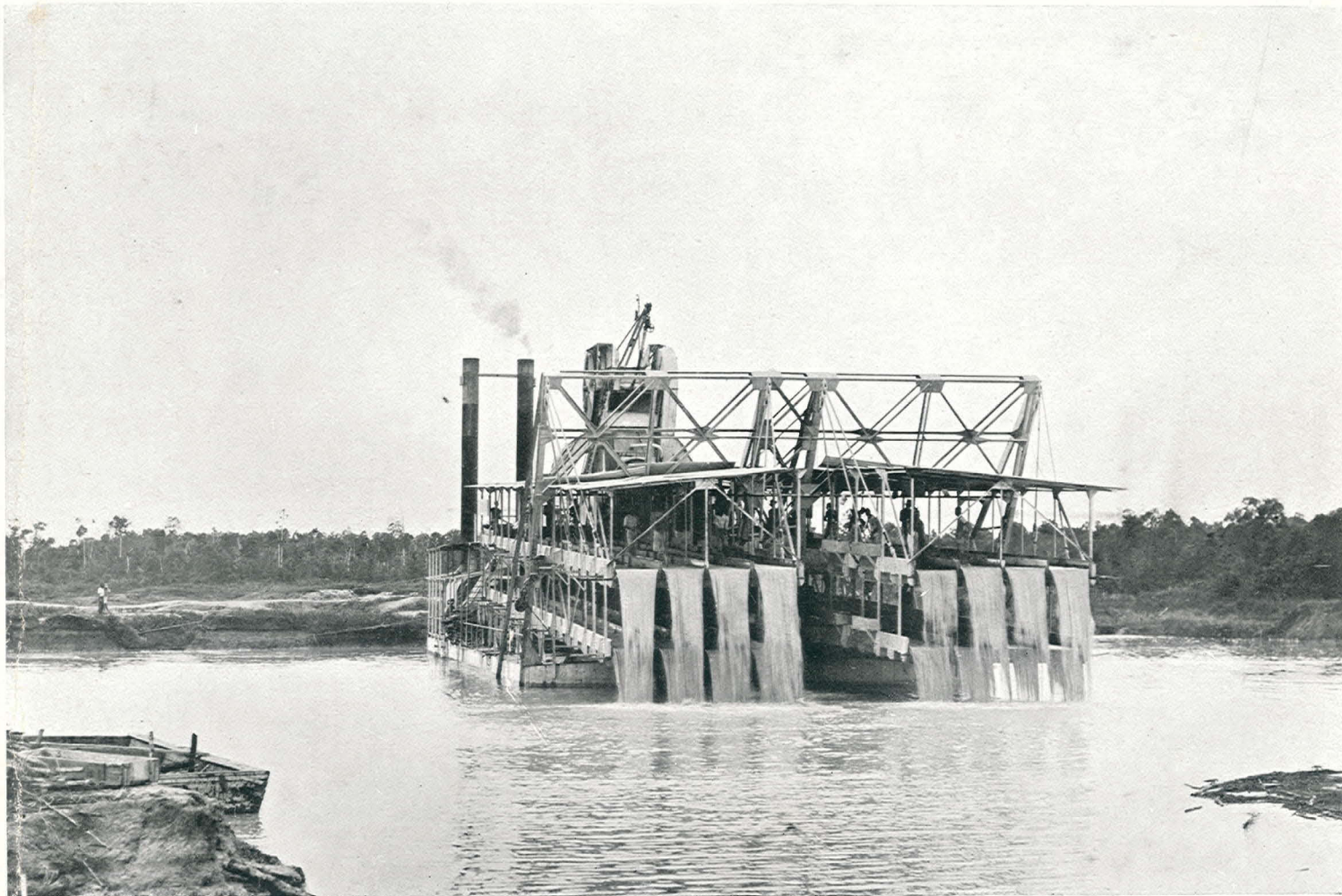
A. B. C. 5TH AND 6TH EDS.
A. B. C. 5TH AND 6TH EDS.,
WESTERN UNION, 5-LETTER.
WESTERN UNION, 5-LETTER.

"WERF CONRAD",
ENGINEERS AND SHIPBUILDERS, HAARLEM (HOLLAND).



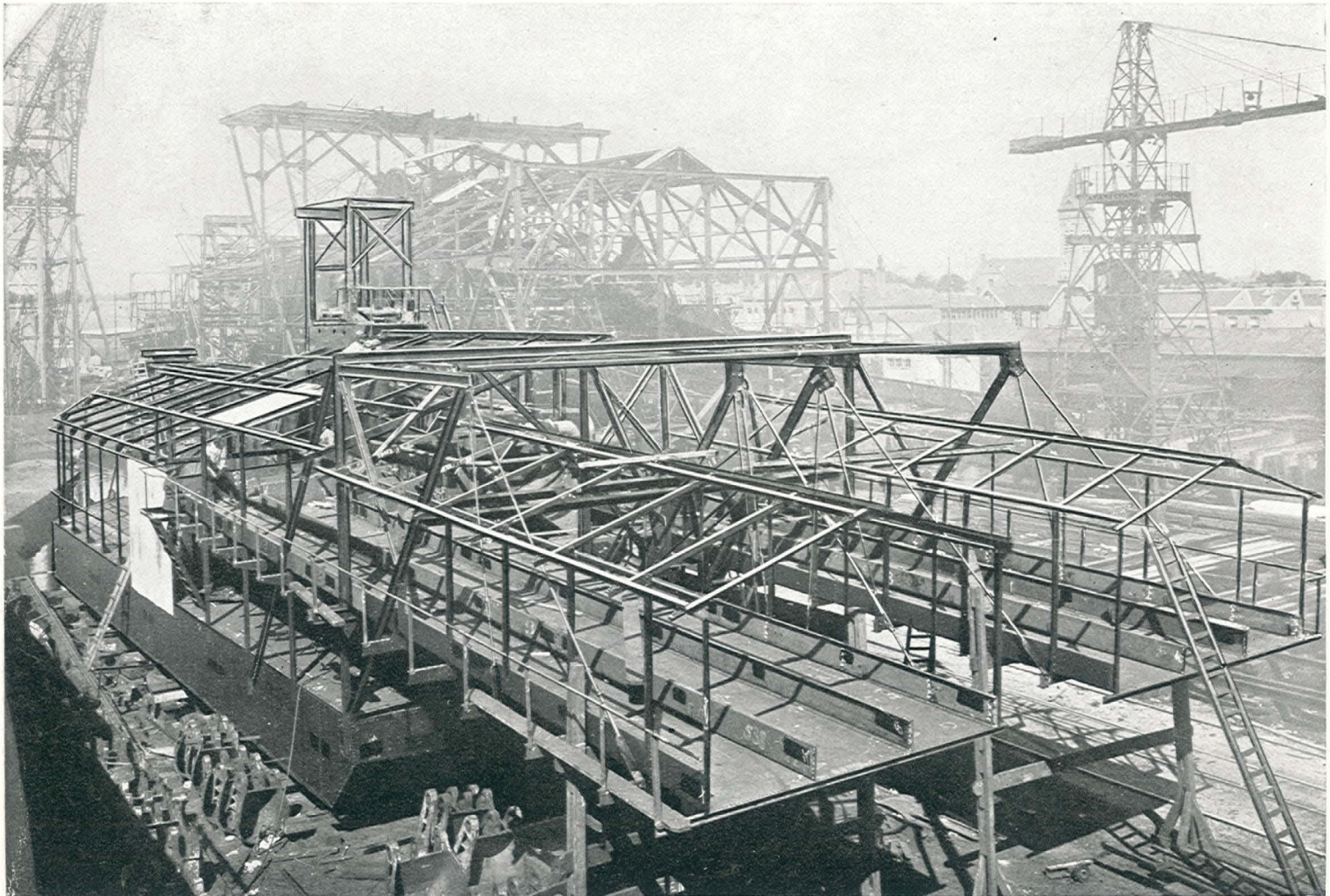
BIRD'S-EYE-VIEW OF WERF CONRAD, HAARLEM, SHOWING 6 TIN DREDGES AND
2 HARBOUR-DREDGES UNDER ERECTION.

**"WERF CONRAD",
ENGINEERS AND SHIPBUILDERS, HAARLEM (HOLLAND).**



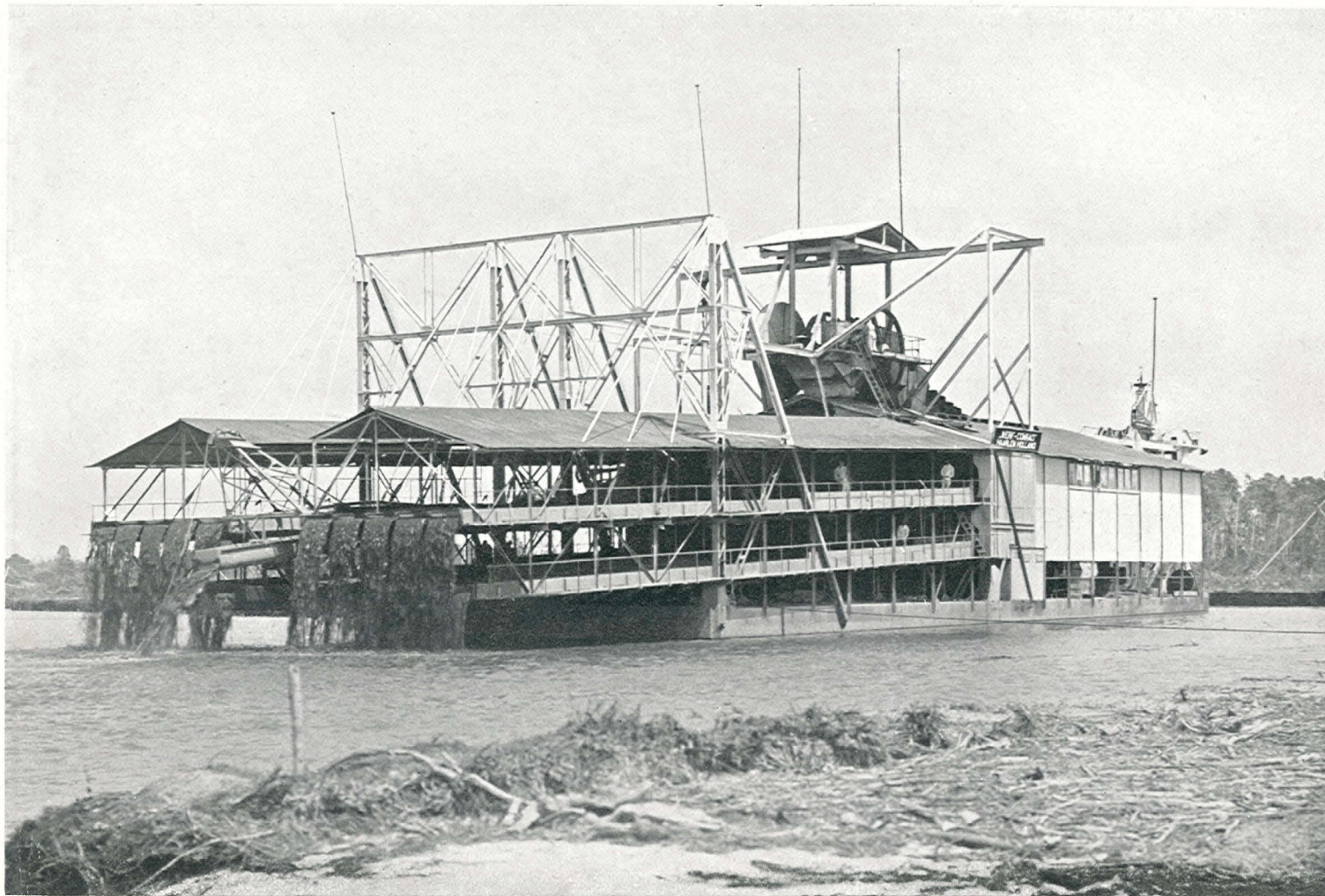
**TIN DREDGE AT WORK IN BILLITON.
CAPACITY OF BUCKETS:
7 CUBIC FEET.**

"WERF CONRAD",
ENGINEERS AND SHIPBUILDERS, HAARLEM (HOLLAND).



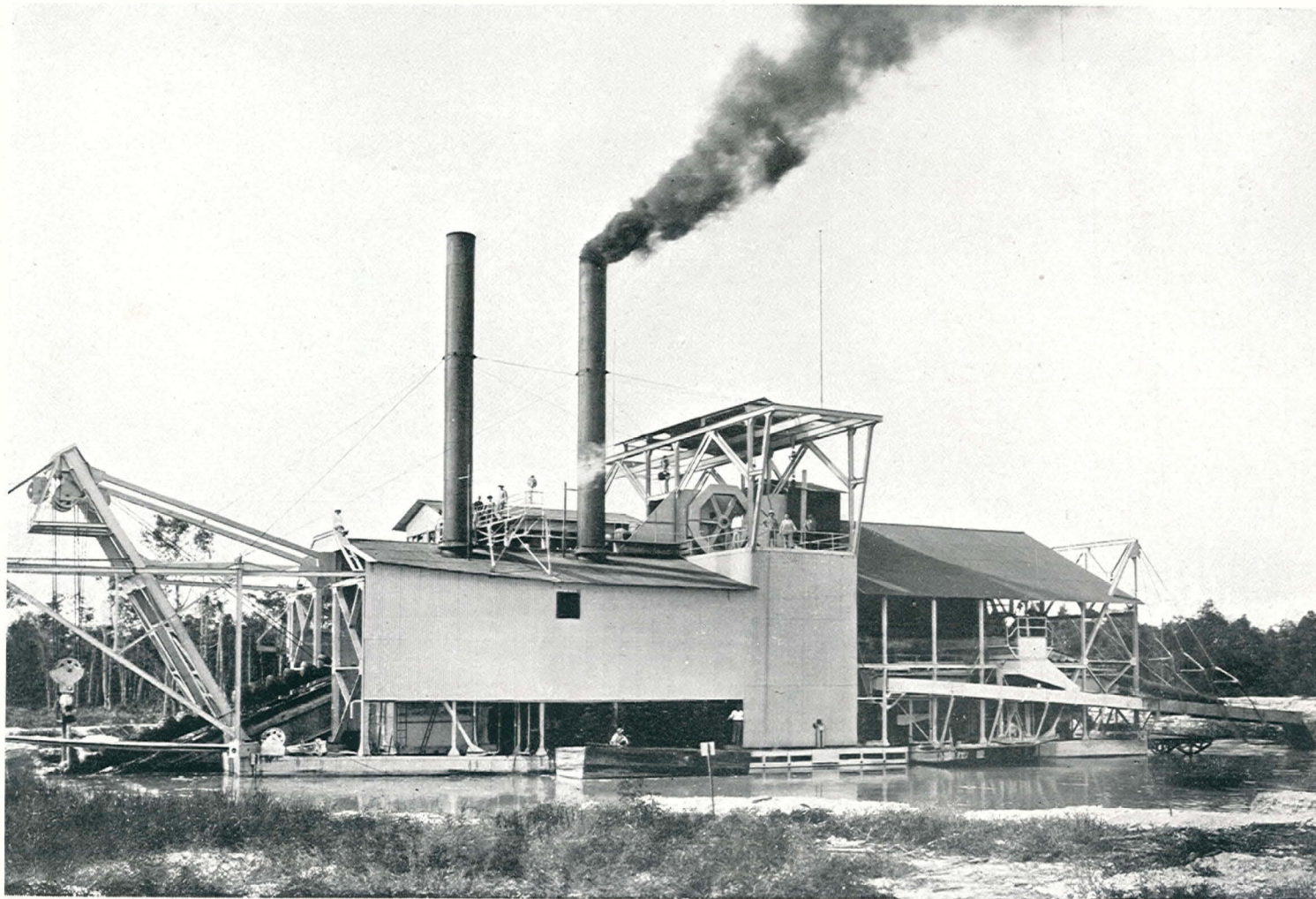
4 CUBIC FEET TIN DREDGE ERECTED IN OUR YARD.

"WERF CONRAD",
ENGINEERS AND SHIPBUILDERS, HAARLEM (HOLLAND).



ELECTRICALLY DRIVEN TIN DREDGE FOR THE DUTCH EAST INDIES.
CAPACITY OF BUCKETS:
7 CUBIC FEET

**"WERF CONRAD",
ENGINEERS AND SHIPBUILDERS, HAARLEM (HOLLAND).**

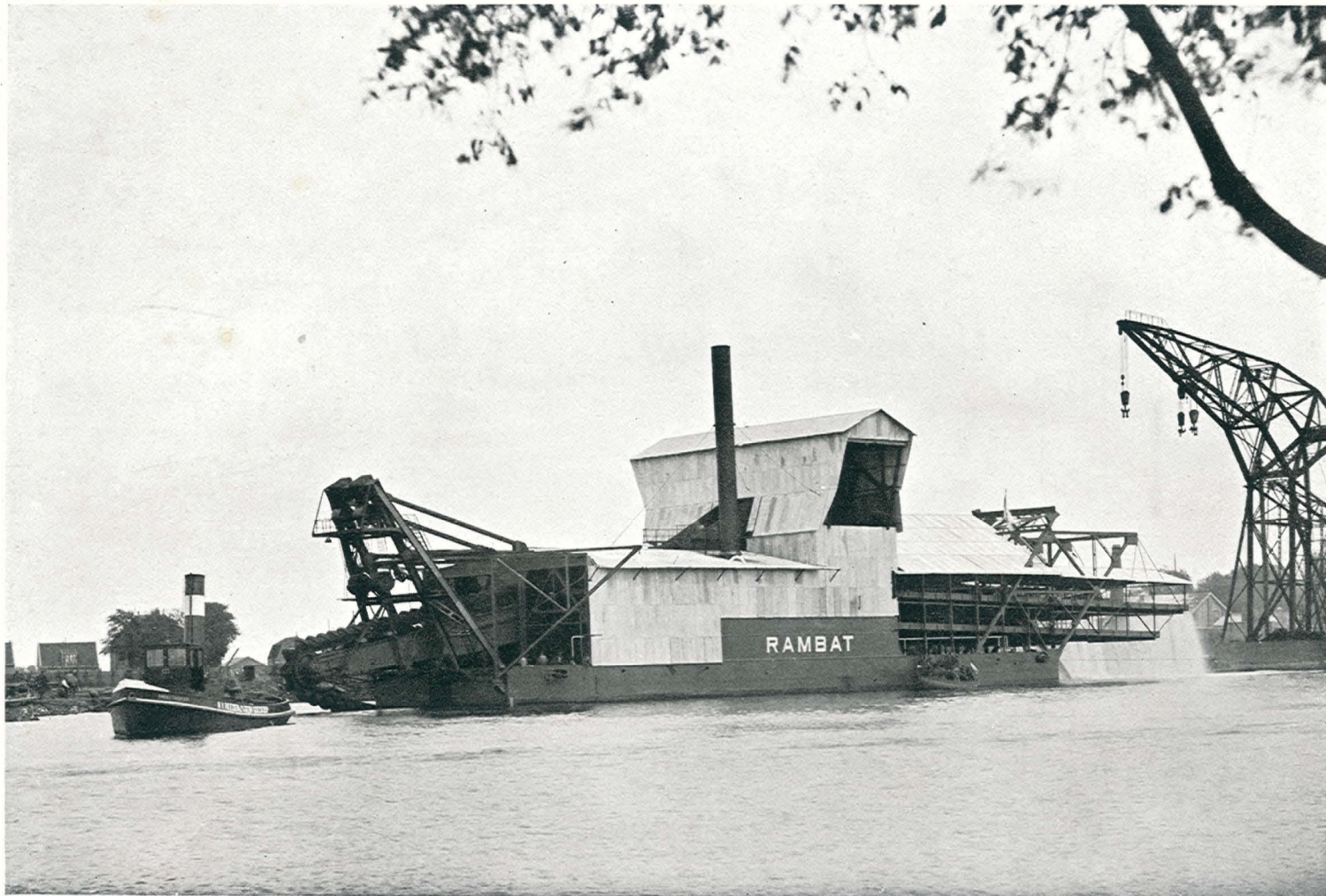


ELECTRICALLY DRIVEN TIN DREDGE FOR THE DUTCH EAST INDIES.

CAPACITY OF BUCKETS: 7 CUBIC FEET.

MAXIMUM DREDGING DEPTH: 50 FEET.

**"WERF CONRAD",
ENGINEERS AND SHIPBUILDERS, HAARLEM (HOLLAND).**

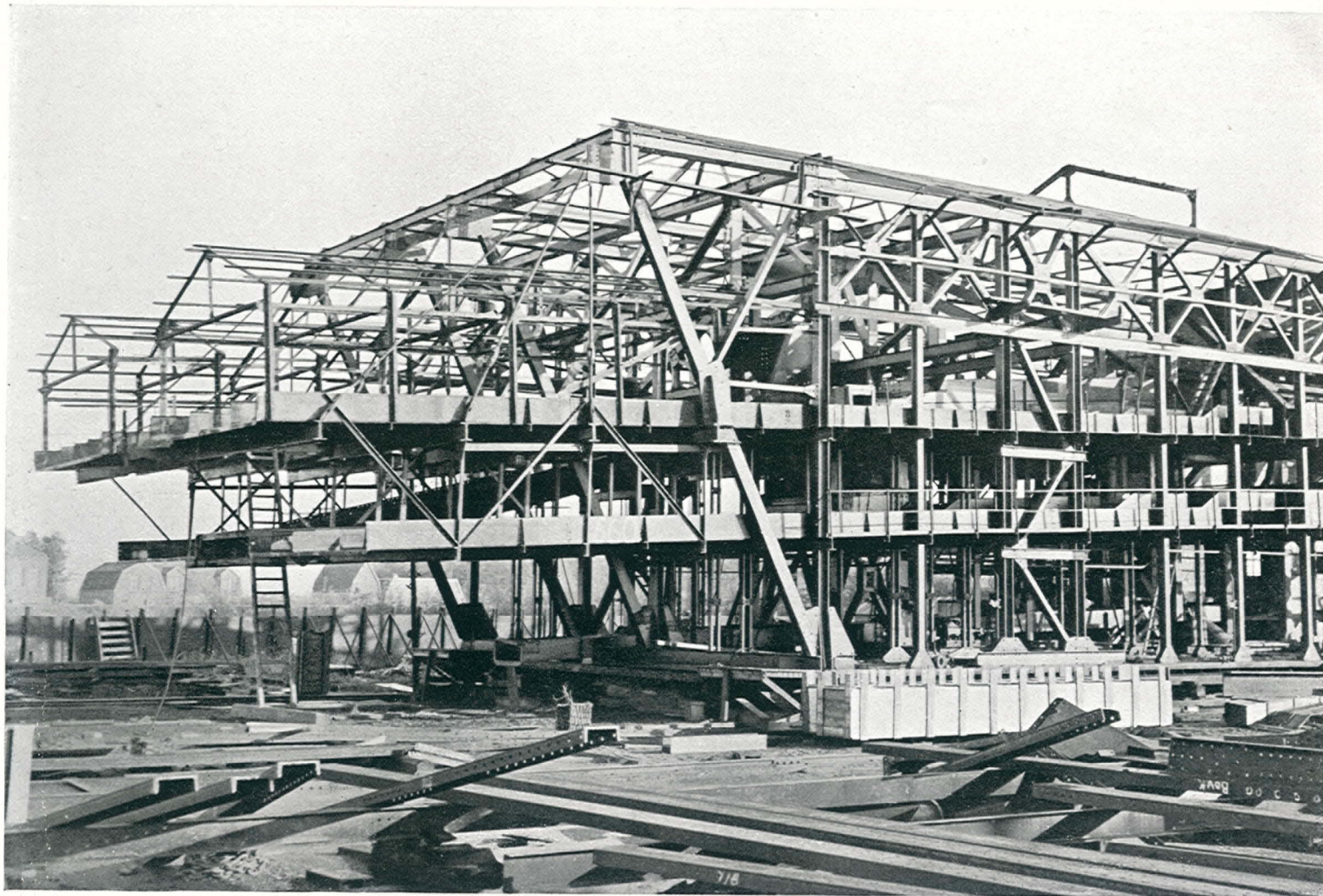


TIN DREDGE BEING TESTED UNDER STEAM IN OUR YARD AT ZAANDAM.

CAPACITY OF BUCKETS: 7 CUBIC FEET.

MAXIMUM DREDGING DEPTH: 72 FEET.

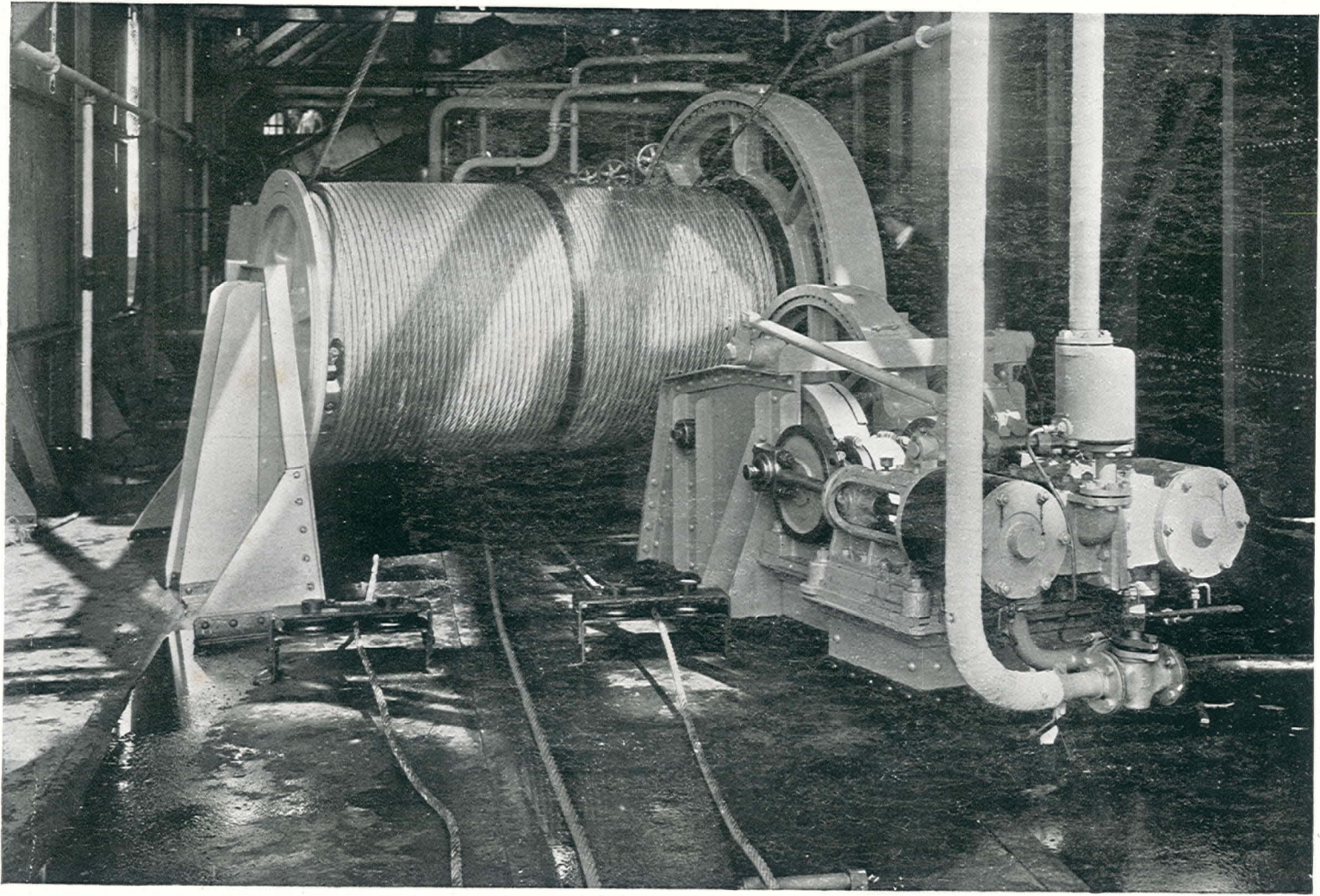
"WERF CONRAD",
ENGINEERS AND SHIPBUILDERS, HAARLEM (HOLLAND).



STEAM-DRIVEN TIN DREDGE FOR SIAM UNDER ERECTION IN OUR YARD AT ZAANDAM.
CAPACITY OF BUCKETS: 7 CUBIC FEET.

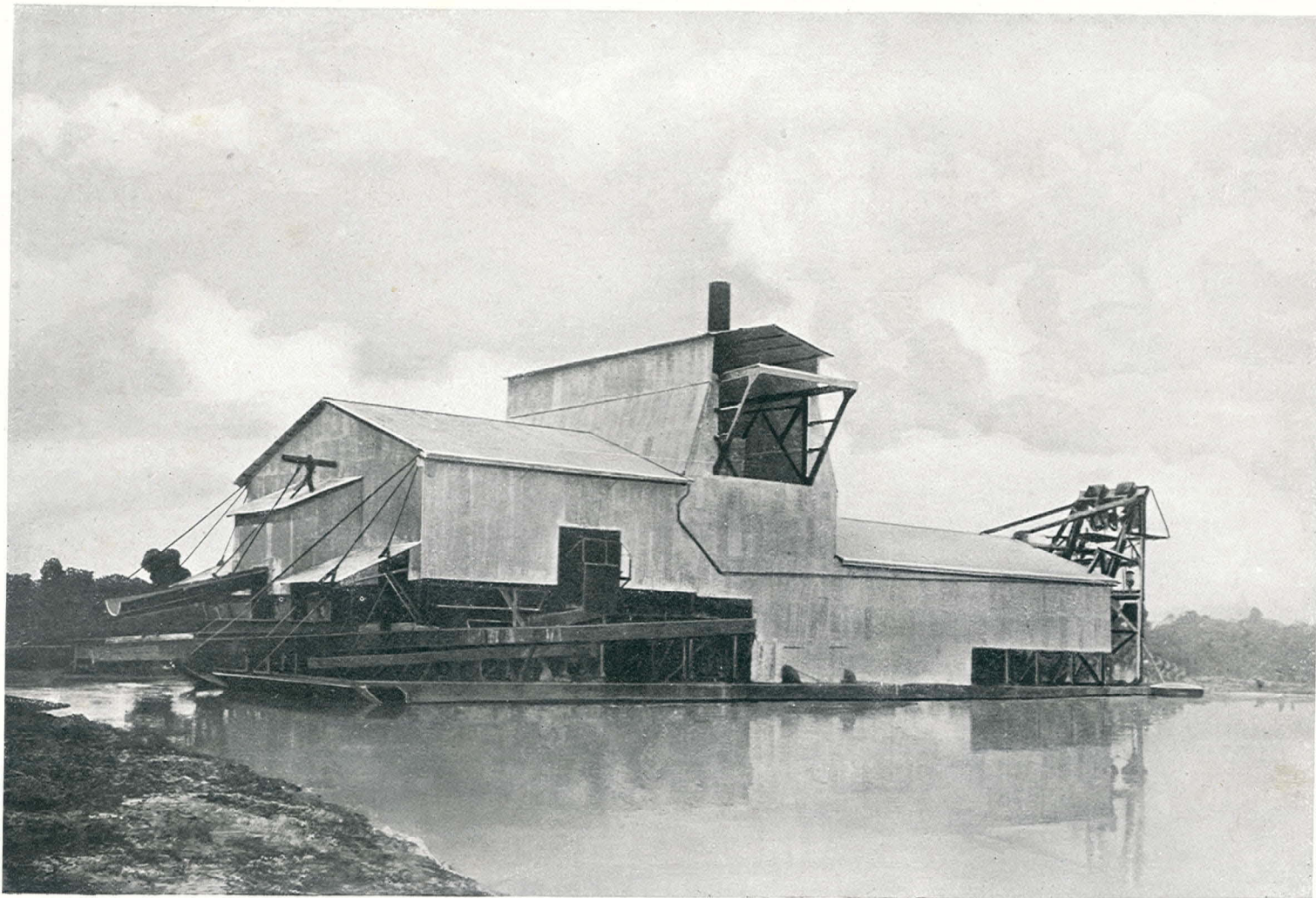
MAXIMUM DREDGING DEPTH: 35 FEET.

"WERF CONRAD",
ENGINEERS AND SHIPBUILDERS, HAARLEM (HOLLAND).



LADDERWINCH.

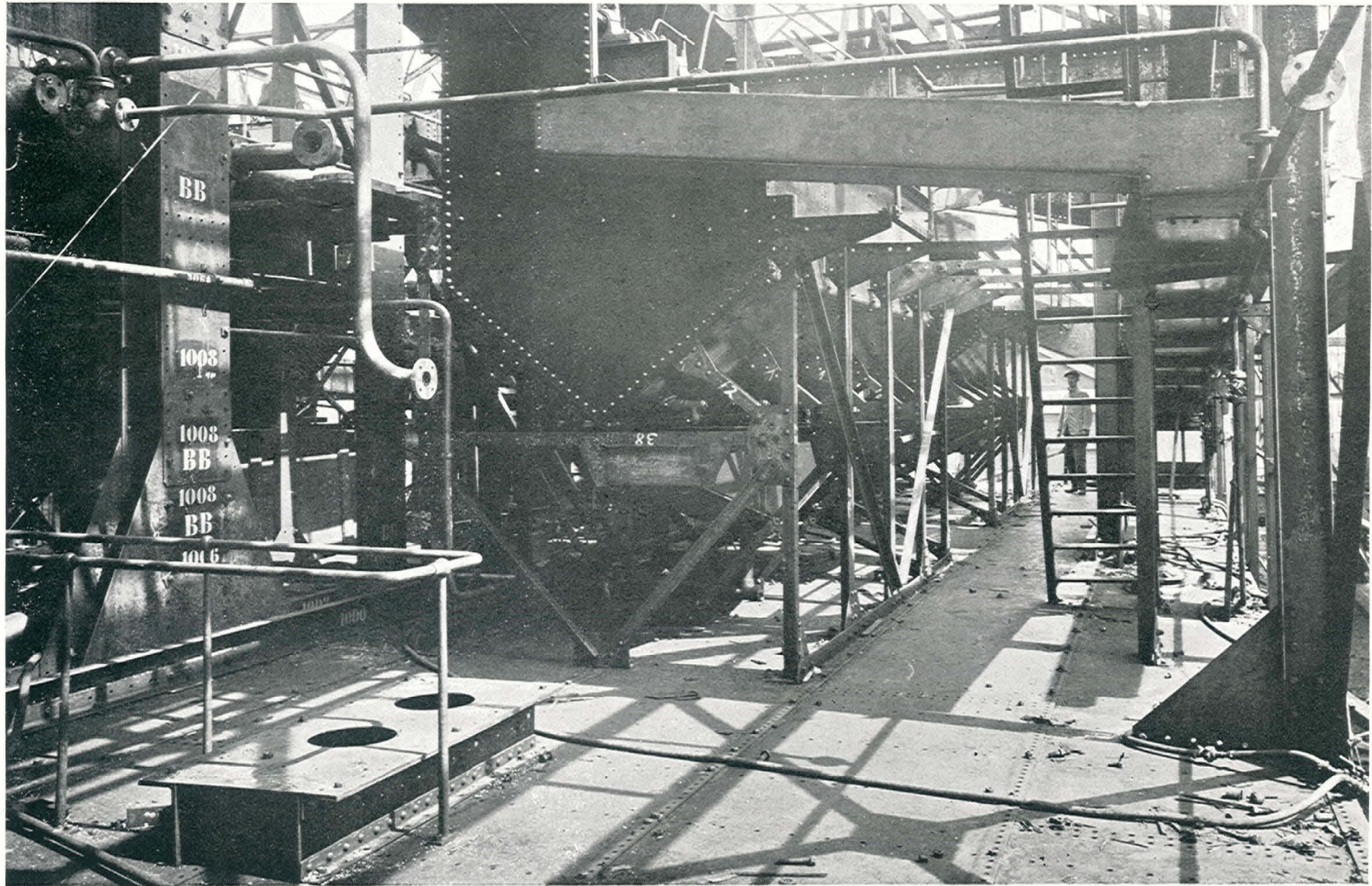
**"WERF CONRAD",
ENGINEERS AND SHIPBUILDERS, HAARLEM (HOLLAND).**



TIN DREDGE AT WORK IN THE FEDERATED MALAY STATES, DREDGING TO A DEPTH OF 86 FEET.

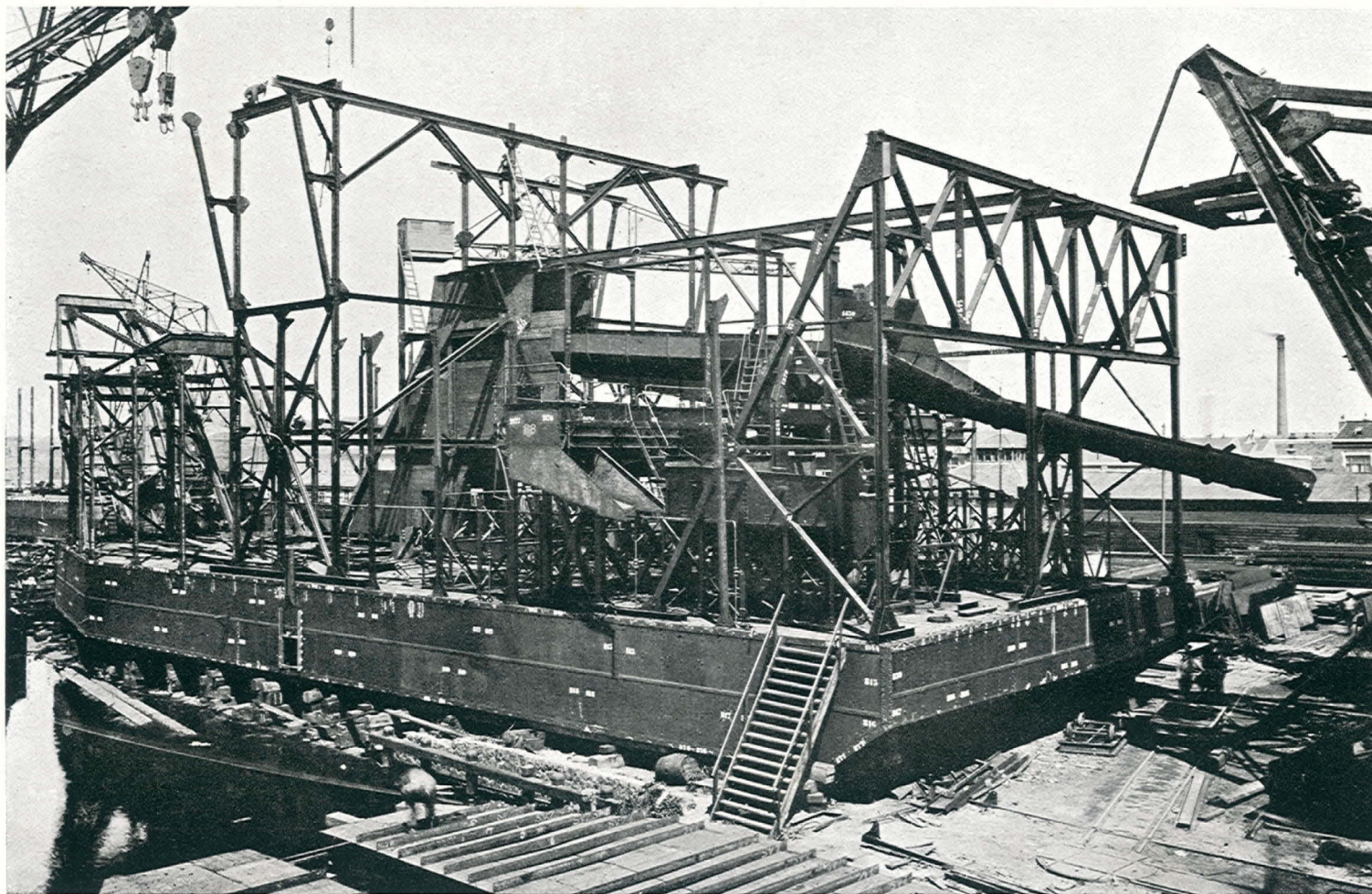
**CAPACITY OF BUCKETS:
12 CUBIC FEET.**

"WERF CONRAD",
ENGINEERS AND SHIPBUILDERS, HAARLEM (HOLLAND).



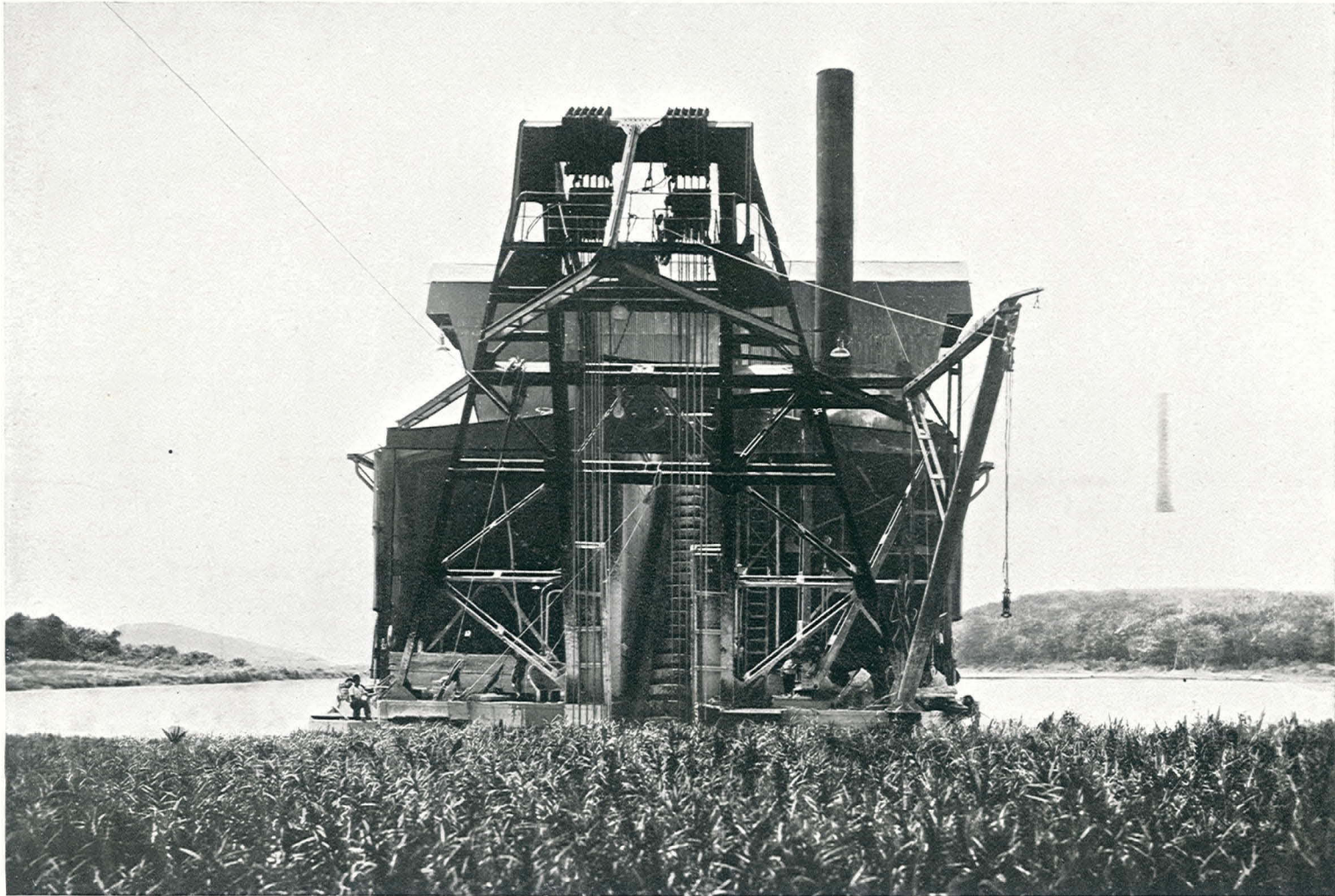
JIGS UNDER ERECTION.

"WERF CONRAD",
ENGINEERS AND SHIPBUILDERS, HAARLEM (HOLLAND).



ELECTRICALLY DRIVEN 7 CUB. FEET TIN DREDGE UNDER ERECTION IN OUR YARD.

"WERF CONRAD",
ENGINEERS AND SHIPBUILDERS, HAARLEM (HOLLAND).

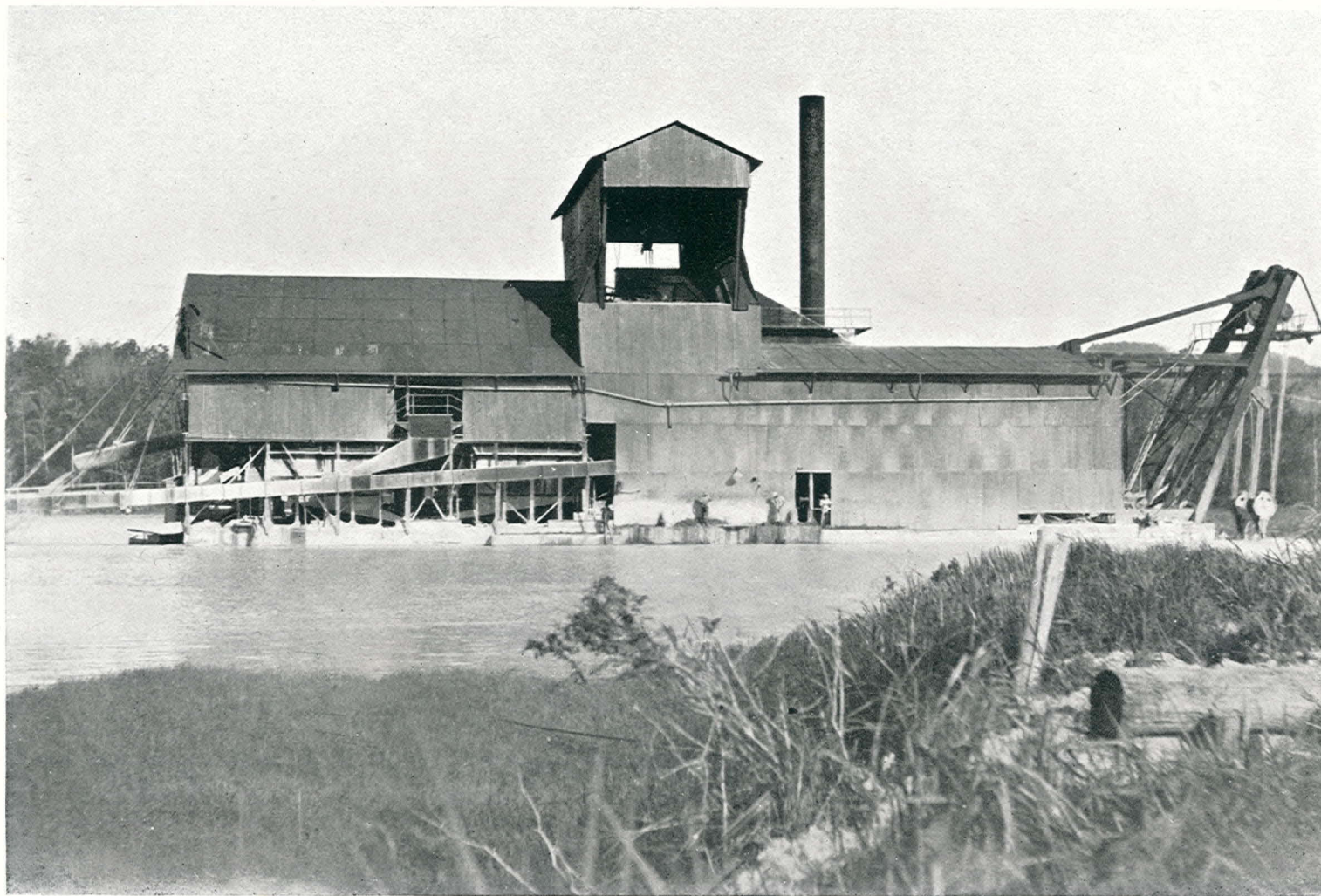


STEAM-DRIVEN TIN DREDGE FOR THE FEDERATED MALAY STATES.

CAPACITY OF BUCKETS: 10 CUBIC FEET.

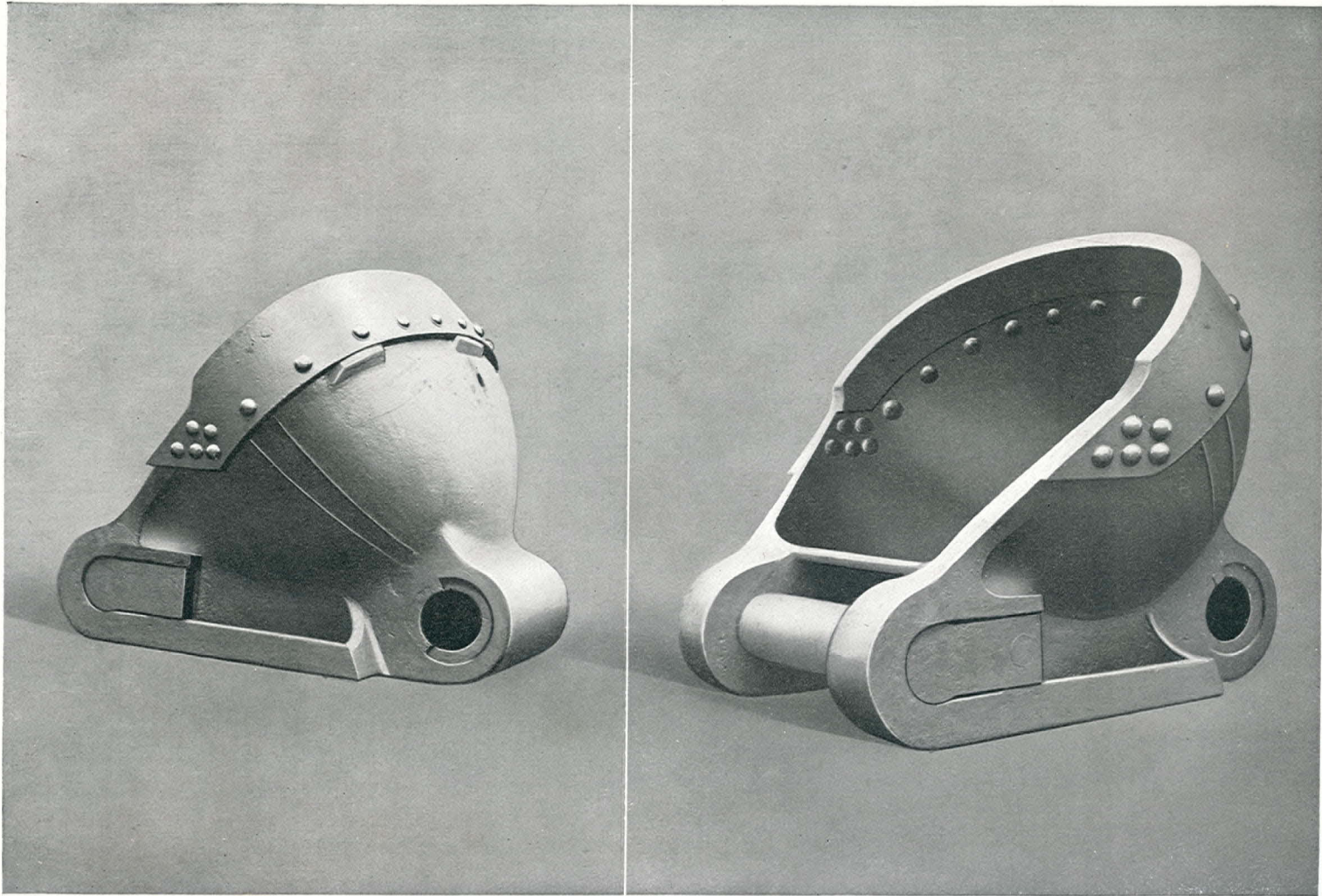
MAXIMUM DREDGING DEPTH: 55 FEET.

"WERF CONRAD",
ENGINEERS AND SHIPBUILDERS, HAARLEM (HOLLAND).



STEAM-DRIVEN TIN DREDGE FOR THE FEDERATED MALAY STATES.

**"WERF CONRAD",
ENGINEERS AND SHIPBUILDERS, HAARLEM (HOLLAND).**



BUCKET OF CLOSE-CONNECTED CHAIN.

**"WERF CONRAD",
ENGINEERS AND SHIPBUILDERS, HAARLEM (HOLLAND).**



ELECTRICALLY DRIVEN TIN DREDGE FOR SIAM.

CAPACITY OF BUCKETS: 9 CUBIC FEET.

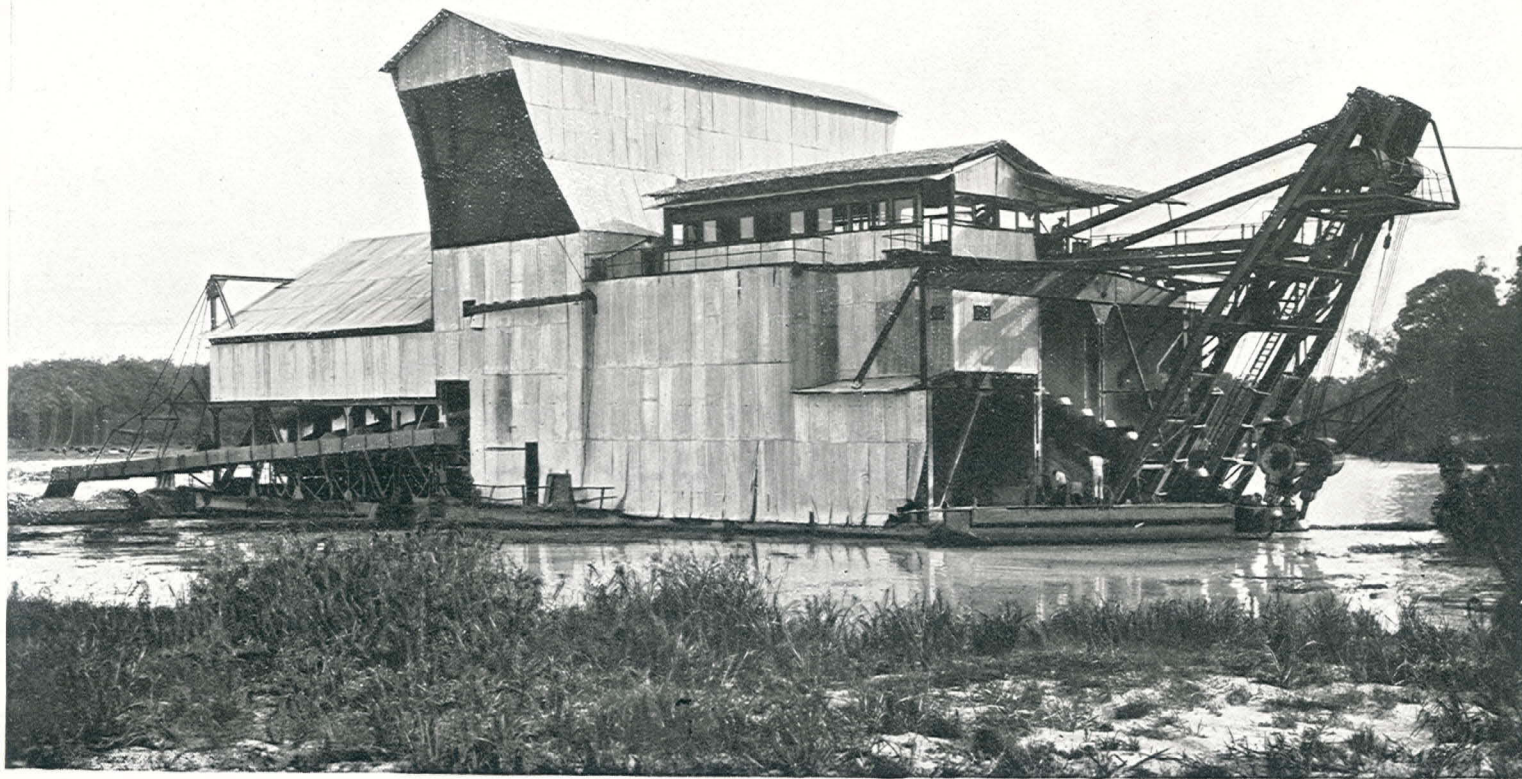
MAXIMUM DREDGING DEPTH: 35 FEET.

"WERF CONRAD",
ENGINEERS AND SHIPBUILDERS, HAARLEM (HOLLAND).



TIN DREDGE AT WORK IN SIAM.

"WERF CONRAD",
ENGINEERS AND SHIPBUILDERS, HAARLEM (HOLLAND).

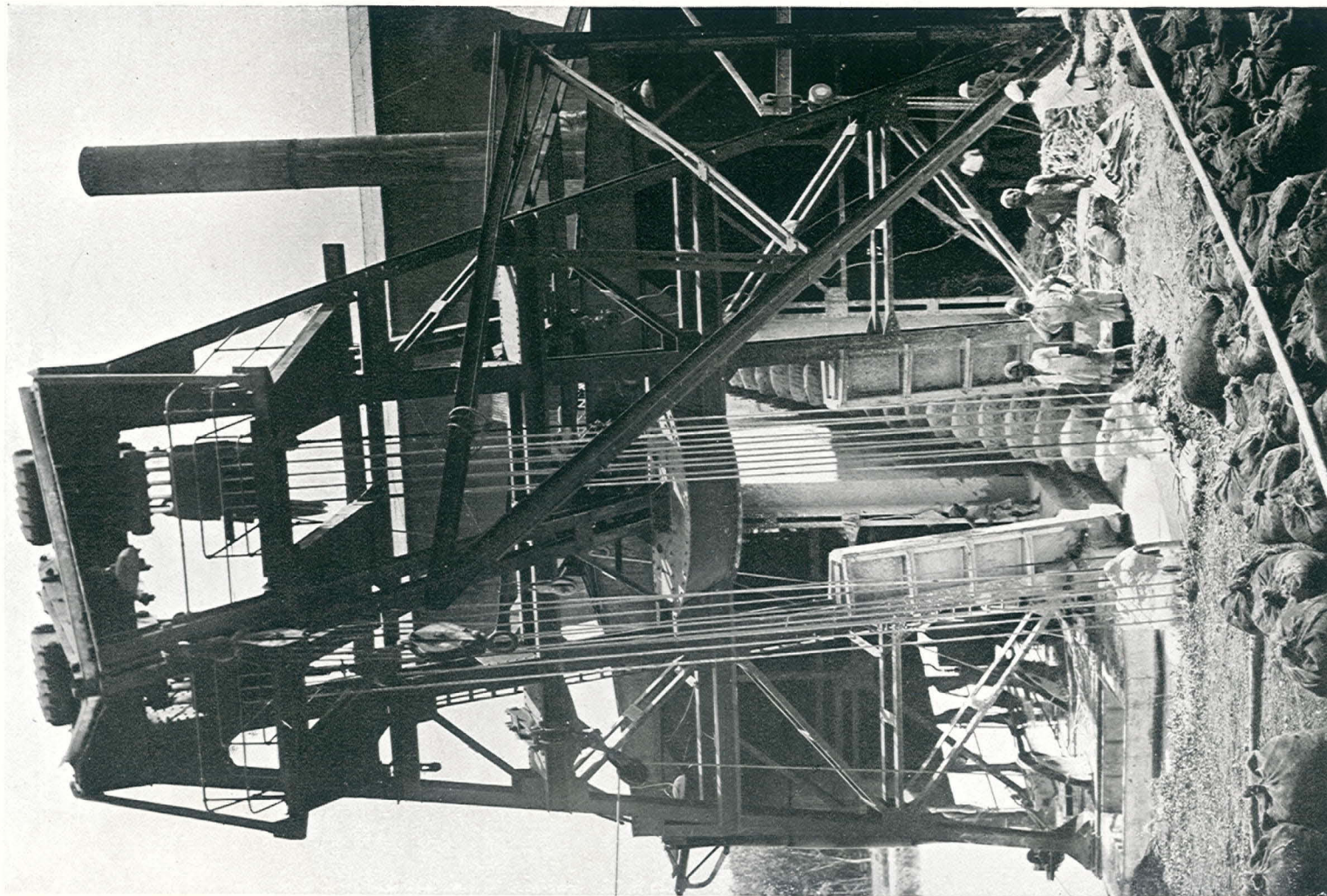


TIN DREDGE AT WORK IN SIAM.

"WERF CONRAD",
ENGINEERS AND SHIPBUILDERS, HAARLEM (HOLLAND).



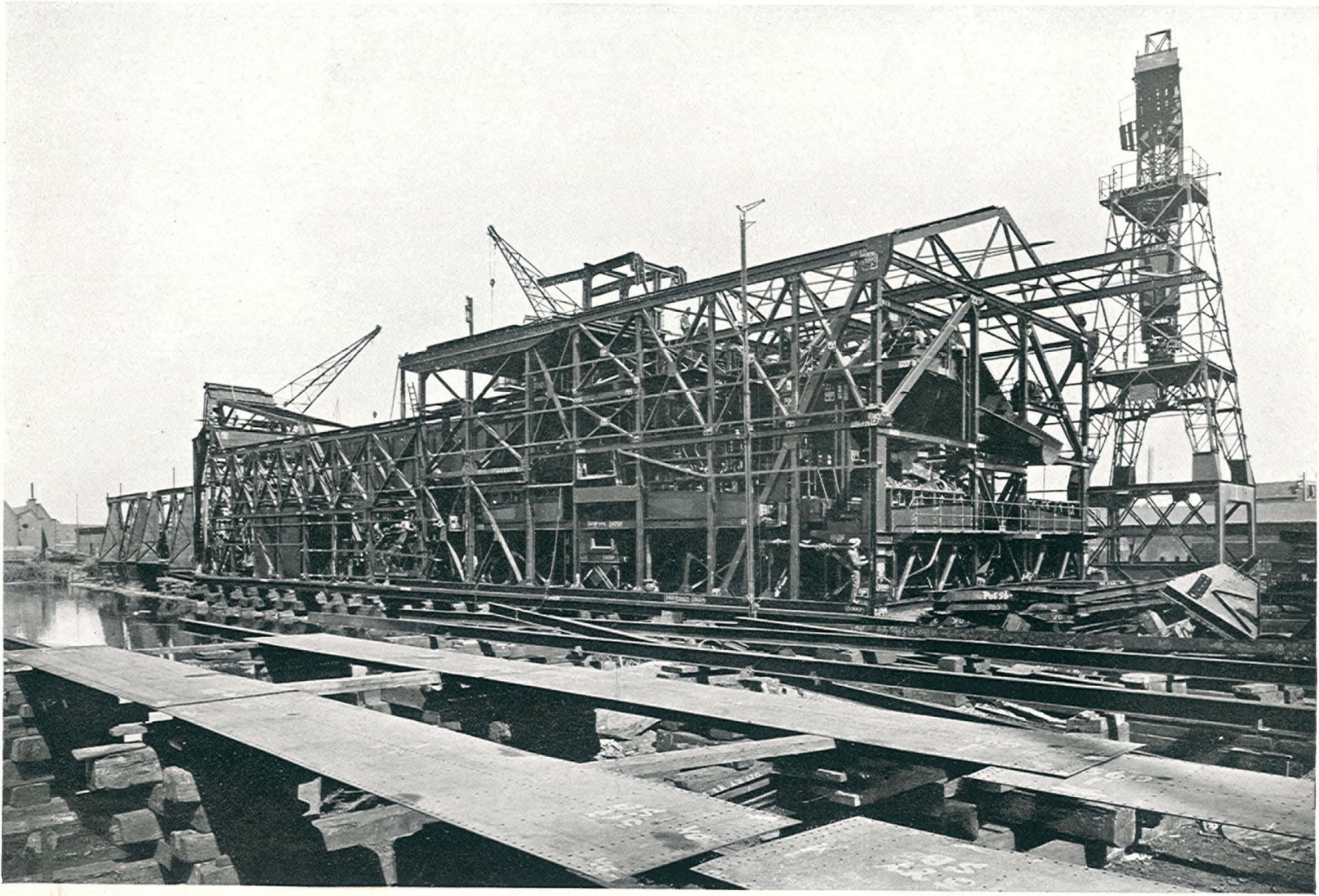
STEAM-DRIVEN TIN DREDGE AT WORK IN THE FEDERATED MALAY STATES.



WERF CONRAD.

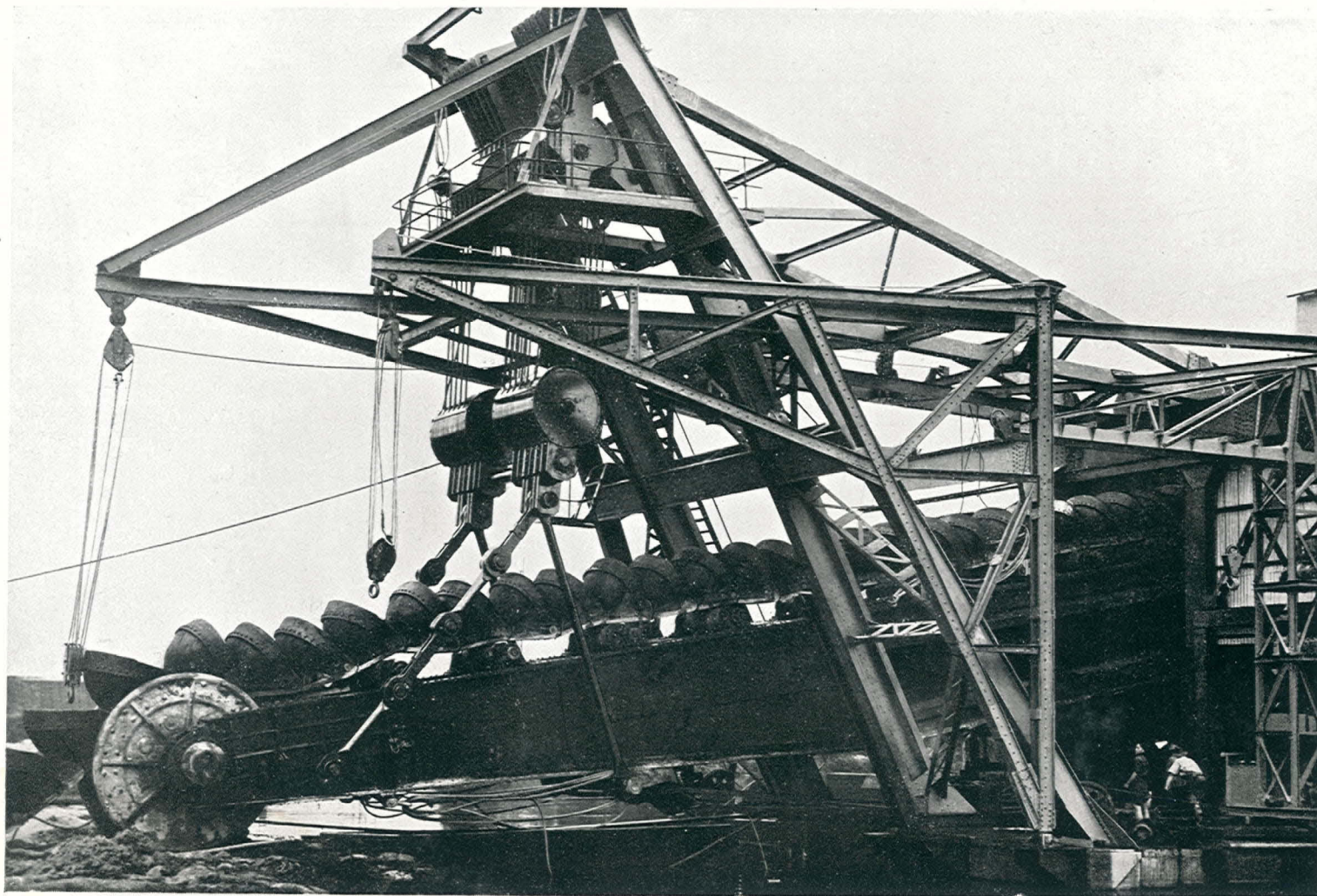
DREDGING IN THE FEDERATED MALAY STATES.

**"WERF CONRAD",
ENGINEERS AND SHIPBUILDERS, HAARLEM (HOLLAND).**



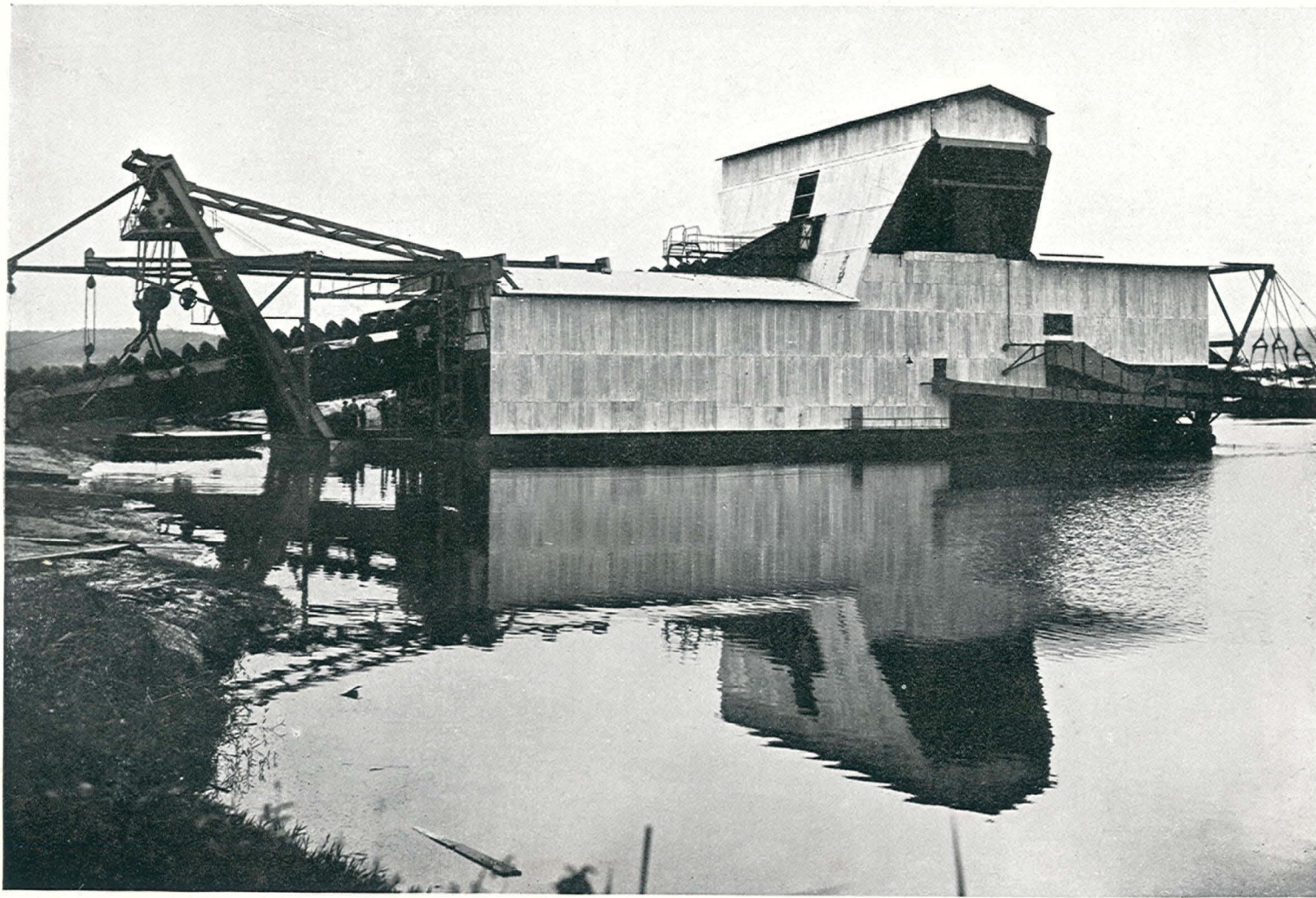
12 CUBIC FEET ELECTRICALLY DRIVEN TIN DREDGE UNDER ERECTION IN OUR YARD AT HAARLEM.

**"WERF CONRAD",
ENGINEERS AND SHIPBUILDERS, HAARLEM (HOLLAND).**



**TIN DREDGE IN THE FEDERATED MALAY STATES.
PUTTING BUCKETS INTO POSITION.**

**"WERF CONRAD",
ENGINEERS AND SHIPBUILDERS, HAARLEM (HOLLAND).**

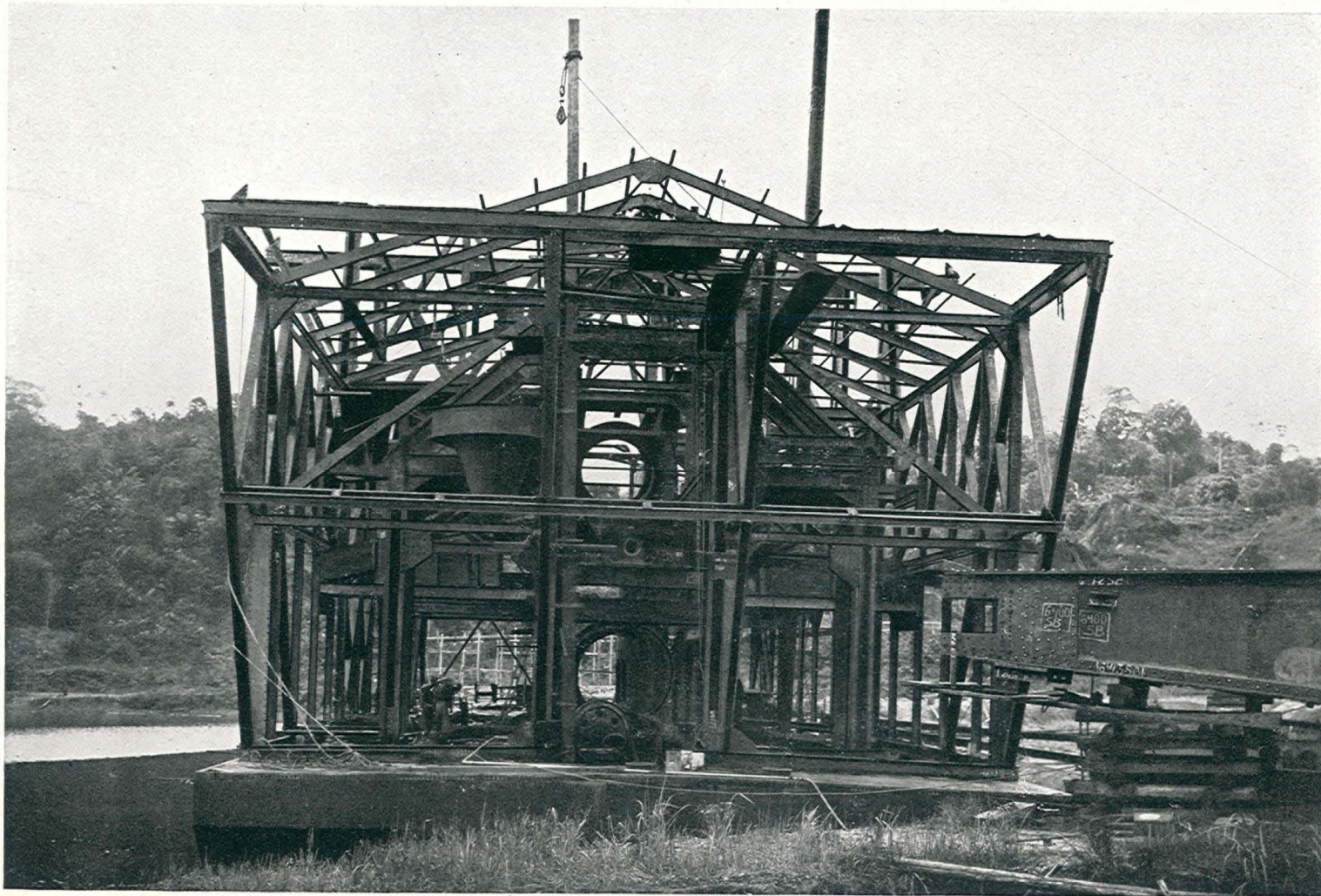


ELECTRICALLY DRIVEN TIN DREDGE IN THE FEDERATED MALAY STATES.

CAPACITY OF BUCKETS: 12 CUBIC FEET.

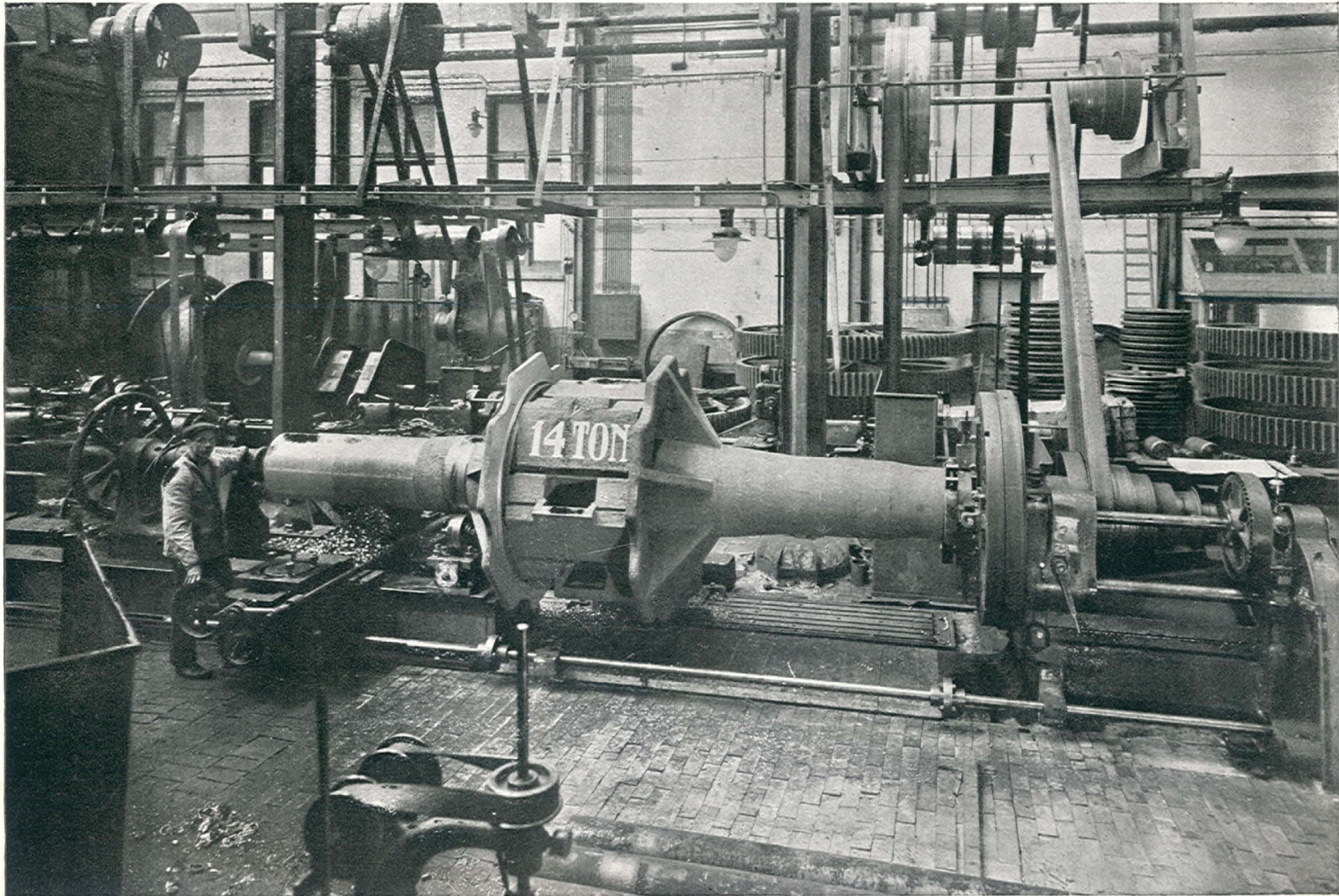
MAXIMUM DREDGING DEPTH: 75 FEET.

"WERF CONRAD",
ENGINEERS AND SHIPBUILDERS, HAARLEM (HOLLAND).



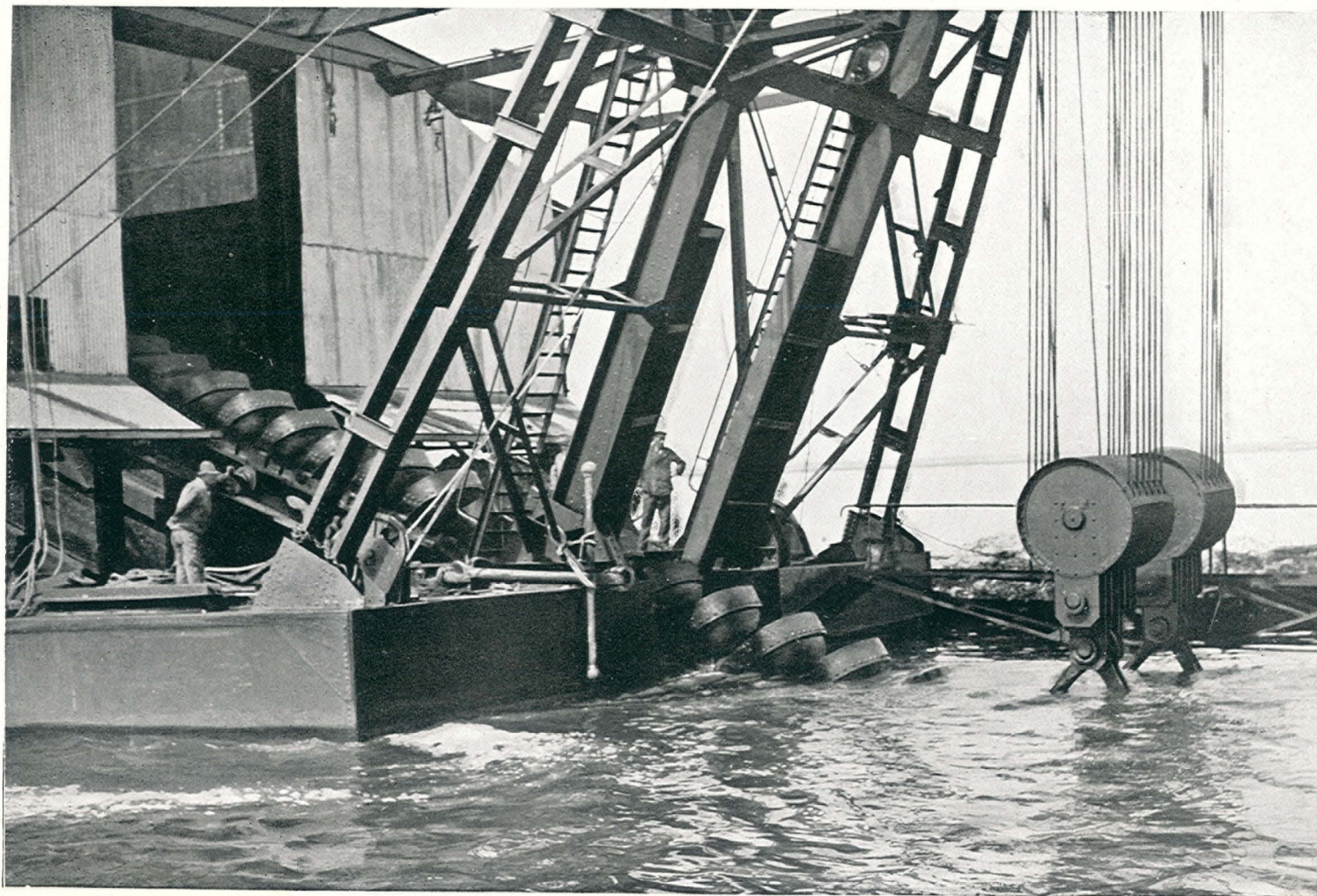
12 CUBIC FEET TIN DREDGE UNDER ERECTION IN THE FEDERATED MALAY STATES.

**"WERF CONRAD",
ENGINEERS AND SHIPBUILDERS, HAARLEM (HOLLAND).**

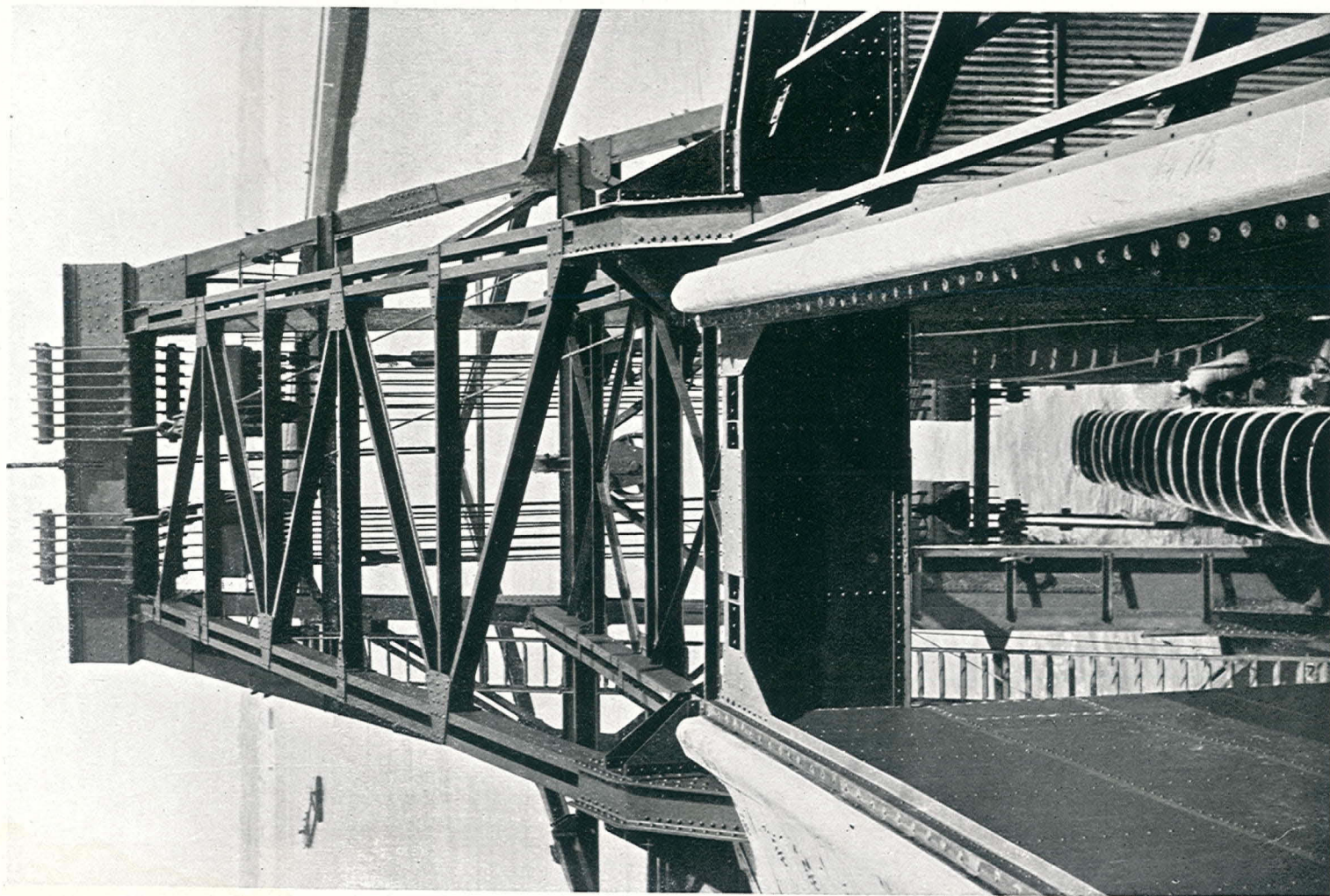


TOP TUMBLER CAST IN ONE PIECE WITH SHAFT.

"WERF CONRAD",
ENGINEERS AND SHIPBUILDERS, HAARLEM (HOLLAND).



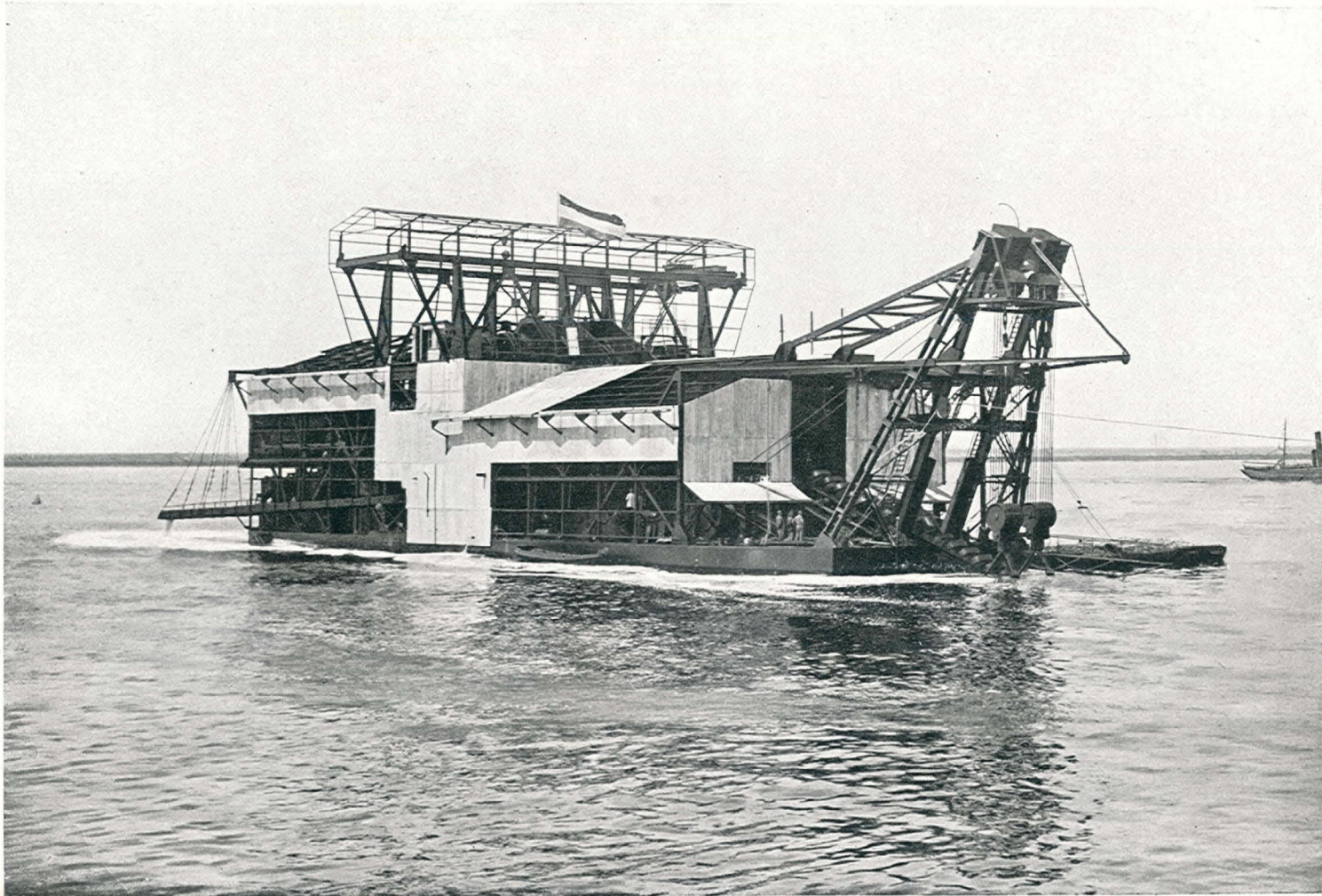
14 CUBIC FEET TIN DREDGE.
TESTS IN HOLLAND.



WERF CONRAD.

FORE-GANTRY OF 14 CUBIC FEET TIN DREDGE.

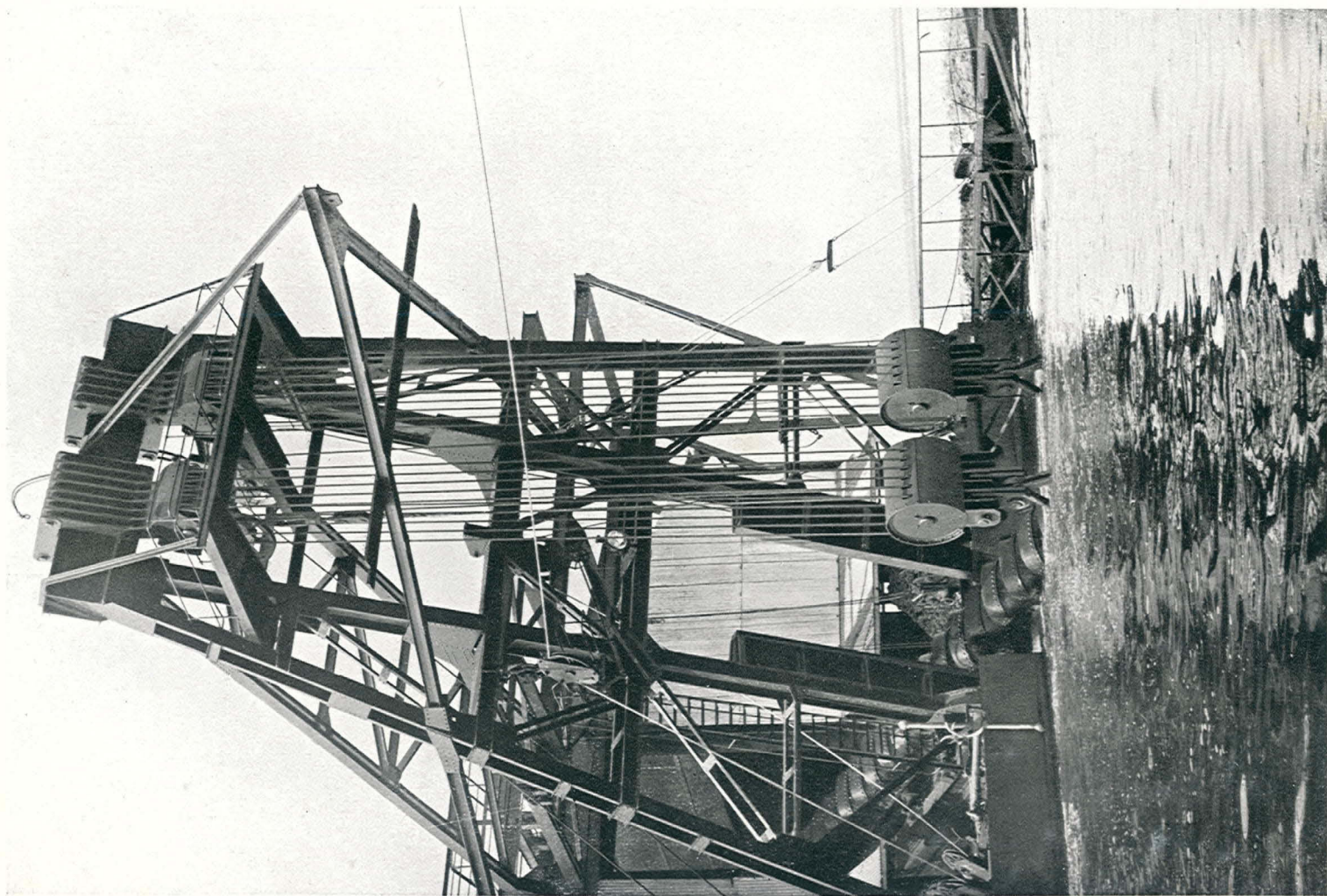
**"WERF CONRAD",
ENGINEERS AND SHIPBUILDERS, HAARLEM (HOLLAND).**



ELECTRICALLY DRIVEN TIN DREDGE FOR BURMAH.

CAPACITY OF BUCKETS: 14 CUBIC FEET.

MAXIMUM DREDGING DEPTH: 75 FEET



WERF CONRAD.

FORE-GANTRY.