

malaysia and singapore

ILLUSTRATED
STAMP ALBUM

Copyright 1967 by
A. M. Mohamed Abdullah & Co,
21, Jalan Mountbatten,
Kuala Lumpur, Malaysia.

Published in Malaysia
by
A. M. MOHAMED ABDULLAH & CO,
21, JALAN MOUNTBATTEN,
KUALA LUMPUR, MALAYSIA.
BRANCH
7, MARKET STREET, SINGAPORE I.
Member The Philatelic Traders Society Ltd, London,
The American Stamp Dealers Association New York.

CPLKL74291

MALAYSIA AND SINGAPORE

IN BRIEF

The Federation of Malaysia came into existence consisting the eleven States of the Federation of Malaya, North Borneo (now Sabah) Sarawak and Singapore on September 16th. 1963. Common ties of race and language together with a common historical and geographical background knit these States together. Malaysia covers an area of about 12,308 square miles, occupying two distinct regions known as East and West Malaysia.

There is evidence that important Malay Kingdoms existed as early as the beginning of the Christian era. These Kingdoms were later conquered by Sri Vijaya of East Sumatra, the Majapahit Kingdom in Java, Thais from the North, the Dutch, the Portugese and finally the British East India Company took over by treaty. The three Settlements of Singapore, Malacca and Penang was transferred from the control of the East India Company to the Colonial Office in Britain in 1867, when the first set of stamps were issued with the name of Straits Settlements. The country entered an era of peace under the rule of a Sultan each with a British Adviser. In 1941 Malaya was captured by the Japanese and occupied until 1945.

On August 31st. 1957, Malaya became an Independent country with its sovereign, the Yang di-Pertuan Agong (King) elected amongst the rulers for a period of five years. While Singapore remained under the British with a new constitution introduced in 1959. Four years later the Federation of Malaysia was formed. On August 9th. 1965, Singapore became an Independent Republic State.

The people of Malaysia and Singapore are Malays, Chinese and Indians with a sprinkling of people of Portugese, Dutch or British decent. The main products of Malaysia are tin, rubber, palm oil and timber, while Singapore is one of the largest ports and industrial city in the South East Asia.

SINGAPORE

A Crown Colony until the end of 1957. From 1st August 1958, an internally self-governing territory designated the State of Singapore. From 16th Sept. part of the Malaysian Federation and on 9th August 1965 became an Independent state within the Commonwealth.

1953 Q. E. CORONATION Wmk Script CA



37. Queen Elizabeth

Issued on 2nd June to commemorate the Coronation of Her Majesty Queen Elizabeth II.

1959 NEW CONSTITUTION Wmk Block CA



53



54



55



56



57



58

SINGAPORE

LIONS

1st June 1959. The above set of 6 Stamps were issued to mark the New Constitution of Singapore.

COPYRIGHT



SINGAPORE

1955 NEW DEFINITIVES Wmk Script CA



38. Chinese Sampan



39. Malay Kolek



40. Twa-kow



41. Lombok Sloop



42. Trengganu Pinas



43. Palari



44. Timber Tongkang



45. Hainan Trader



46. Cocos-Keeling Schooner



47. Aircraft



48. Oil Tanker



49. M. S. Chusan



50. Raffles Statue



51. Singapore River



52. Arms of Singapore

Issued on 4th Sept, 1955 with inset portrait of Her Majesty Queen Elizabeth II

COPYRIGHT



SINGAPORE

1960 NATIONAL DAY

Wmk Block CA



59.

Issued on 3 June 1960.

Singapore State Flag



60.

1961 NATIONAL DAY

Wmk Block CA



61.

Issued on 3 June 1961.

Clasped Hands



62.

1962 NATIONAL DAY

No Wmk



78.

Issued on 3 June 1962.

The Roll of Labour in Nation-Building



79.

1963 NATIONAL DAY

Wmk Block CA



80.

Issued on 3 June 1963.

Blocks of Flats, Singapore



81.

1960, 61, 62, 63, A set of two stamps were issued for each year to commemorate the Singapore National Day.

COPYRIGHT



SINGAPORE

1962 NEW (FISH) DEFINITIVES Wmk Block CA



65 Six-banded Barb



64. Sea Horse



66. Clown Fish



69. Harlequin



67. Archer Fish



72. Two Spot Gourami



71. Butterfly Fish

On 31 March 1962 Singapore issued 7 stamps depict fishes. This series is part of the New Definitive Set. The other values were issued in 1963.

COPYRIGHT

SINGAPORE

1963 NEW (ORCHIDS) DEFINITIVES Wmk Block CA



63. Arachnis Maggie Ooi



68. Vanda Tan Chay Yan



70. Grammatophyllum Speciosum



73. Vanda Miss Joaquim

1963 NEW (BIRDS) DEFINITIVES Wmk Block CA



74. White Rumped Shama



75. White Throated Kingfisher



76. Yellow-breasted Sunbird



77. White-bellied Sea Eagle

Issued On 10 March 1963, part of the new definitives depict Orchids and Birds.

COPYRIGHT

SINGAPORE

1963 CULTURE FESTIVAL Wmk. Block CA.



82. Dancers in National Costume

Issued on 8th August 1963 to mark the South East Asia Culture Festival held in Singapore.

1966 FIRST ANNIVERSARY OF INDEPENDENCE



83



84



85

On 9th August 1966 the above set was issued to mark the 1st Anniversary of Singapore Independence. Singapore attain Independence on 9th AUG, 1966.

1966 NEW DEFINITIVES Wmk block CA



86. Sea Gull

Issued on 9th Nov 1966 is part of the Definitive Birds Series



SINGAPORE

1967 NATIONAL DAY

No Wmk



87



88



89

Issued on 9th August, 1967 to Commemorate the National Day of the Republic.

1967 SECOND AFRO - ASIAN HOUSING CONGRESS

No Wmk



90



91



92

Issued on 7th October, 1967 to Commemorate the Conference with Representatives from 26 to 30 Afro-Asian Countries.

COPYRIGHT



SINGAPORE

1968 POSTAGE DUES

Wmk BLOCK CA



D1



D2



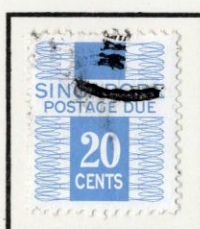
D3



D5



D6



D7



D8

On 1st February 1968 a New Set of Postage Due Labels
Were issued to Replace the Malayan Postal Union Postage Due Stamps.

COPYRIGHT



SINGAPORE

1968 NATIONAL DAY

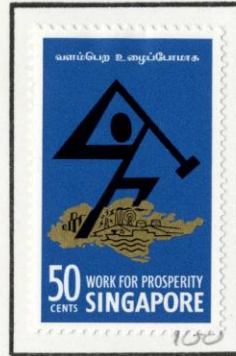
No Wmk



108



109



110

Issued on 9th August 1968 to Mark the National Day

1968 NEW (DANCING) DEFINITIVES



111 Sword Dance
29.12.68



112 Lion Dance
1.12.68



113 Baratha Natyam Dance
29.12.68



114 Umbrella Dance
29.12.68



115 Katakali Dance
1.12.68



116 Lu Chih Shen and
Lin Chung Masks
29.12.68



117 Candle Dance
1.12.68



118 Kuda Kepang Dance
1.12.68



119 Dragon Dance
1.12.68



120 Yao Ohi Mask
29.12.68

COPYRIGHT

SINGAPORE

ECAFE PLENARY SESSION 1969.

No Wmk



Ecafe Emblem

Issued on 15th April 1969 to Commemorate the Plenary Session of the United Nation Economic Commission for Asia and the Far East.

100,000 HOMES FOR THE PEOPLE 1960 - 1969.

No Wmk



Block of Flates and Slogan.

Issued on 20th July 1969 to Commemorate 100,000th Unit of Public Homes for the People Project 1960-1969.

COPYRIGHT



SINGAPORE

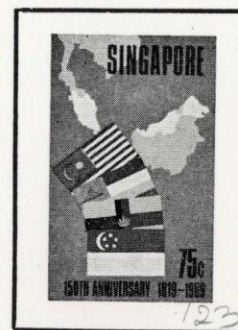
150th ANNIVERSARY OF THE FOUNDING OF SINGAPORE 1869-1969.



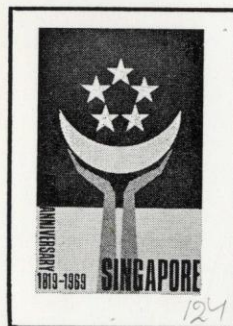
U.N. Emblem
and Outline
of Singapore.



Aircraft over
Silhouette of
Singapore Docks



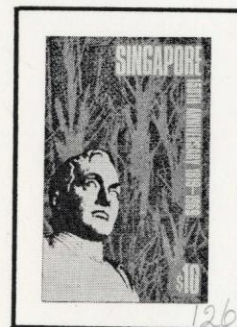
Flags and Outlines
of Malaya and Borneo



Uplifted Hands,
Crescent and Stars



Tail of Japanese
Aircraft and
Searchlight Beams



Bust from Statue
of Raffles

Issued on 9th August 1969 to Commemorate the 150th Anniversary of the Founding of Singapore.

COPYRIGHT



SINGAPORE

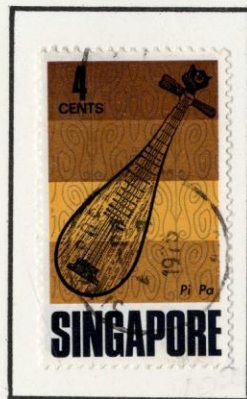
NEW DEFINITIVE ISSUE 1969.
(MUSICAL INSTRUMENTS)



Mirudhangam



Vina



Pi Pa



Rebab



Ta Ku

issued on 10th November 1969 (\$10. stamp Issued on 6.12.69) The New
Definitive Stamps Depicting Musical Instruments.

COPYRIGHT



SINGAPORE

1970 OSAKA EXPO WORLD FAIR No Wmk



Sea Shells



Tropical Fish



Flamingo and Crane



Orchid

Issued on 15th March 1970 to commemorate Expo 70 at Osaka, Japan

1970 10th. ANNIV. OF PEOPLE'S ASSOCIATION No Wmk



Kindergarten



Sport



Culture

Issued on 1st July 1970 to commemorate 10th Anniversary of The People's Association

1970 NATIONAL DAY No Wmk



Silhouette, and Marching Troops Soldier

Issued on 9th August 1970 to commemorate The National Day 1970



SINGAPORE

1970 FESTIVAL OF SPORTS No Wmk



Sprinters



Swimmers



Tennis Players



Racing Cars

Issued on 23rd August 1970 to commemorate the Festival of Sports

1970 SHIPPING SERIES No Wmk



First Container Berth



National Lines



Ship Repairing and Ship Building

Issued on 1st. Nov. 1970 to commemorate the Shipping Industries in Singapore

COPYRIGHT



SINGAPORE

1971 COMMONWEALTH HEADS OF GOVERNMENT MEETING

No Wmk



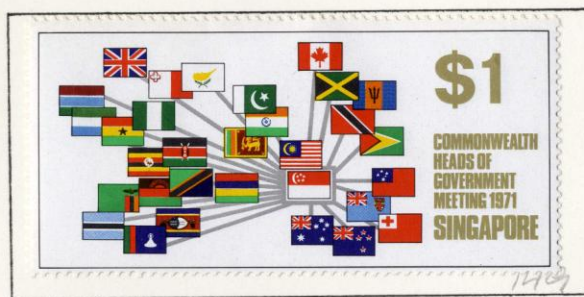
Country Names in Circle



Flags in Circle



Commonwealth Flags



Commonwealth Flags linked to Singapore

Issued on 1st January 1971 to commemorate the Commonwealth Heads of Government Meeting

1971 VISIT ASEAN YEAR

No Wmk



Bicycle Rickshaws



Houseboat 'Village' and Boats



Bazaar



Modern Harbour Skyline



Group of Ancient Temples

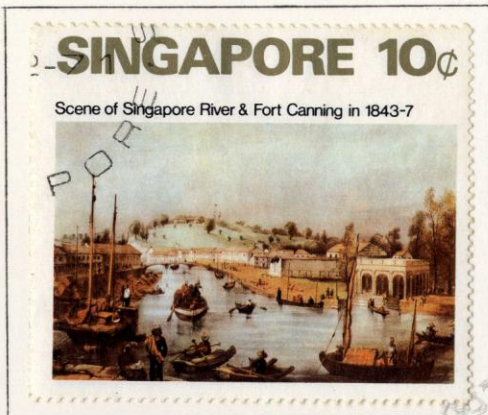
Issued on 4th April 1971 to mark "Visit Asean Year, 1971"



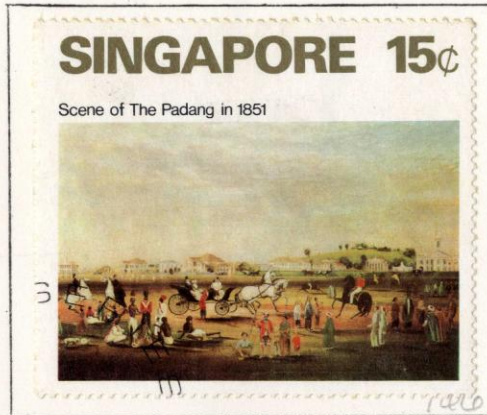
SINGAPORE

1971 ART SERIES

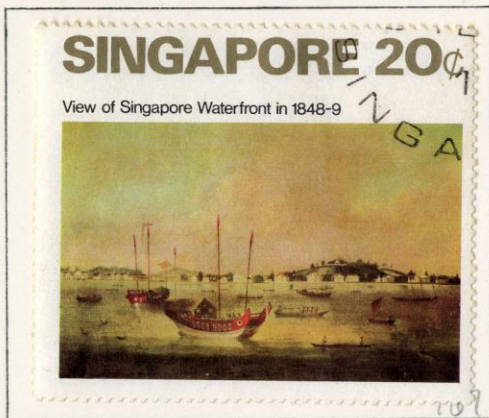
No Wmk



S'pore River & Fort Canning 1843-47



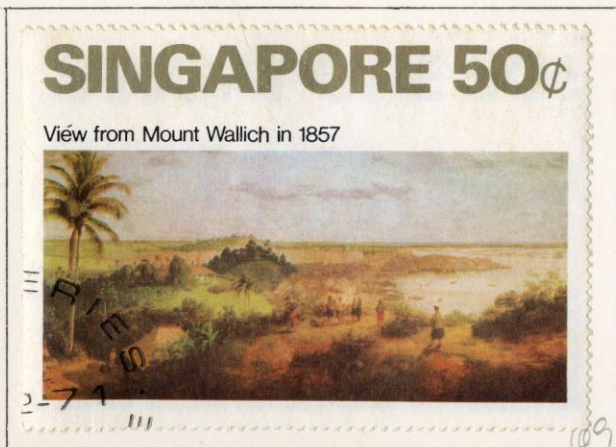
The Padang 1851



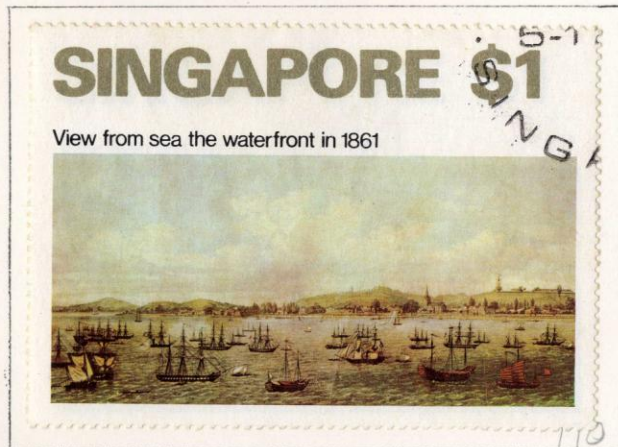
Waterfront 1848-49



View from Fort Canning 1846



View from Mount Wallich 1857



Waterfront 1861

Issued on 5th December 1971 to commemorate the 1971 Art Series

COPYRIGHT



SINGAPORE

1971 FESTIVALS

No Wmk



Chinese New Year



Hari Raya



Deepavali



Christmas

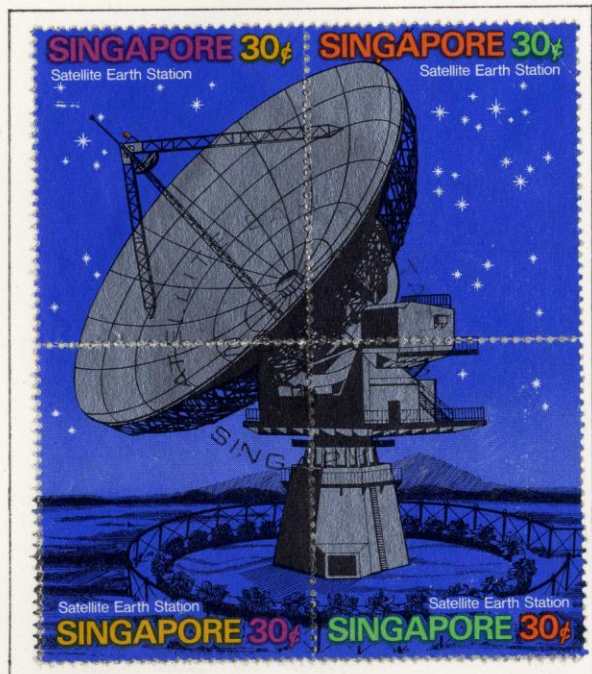
Issued on 9th August 1971 to commemorate Singapore's Four Main Festivals

1971 SATELLITE EARTH STATION

No Wmk



'Dish' Aerial



Issued on 23rd October 1971 to commemorate the Opening of the Satellite Earth Station

COPYRIGHT



SINGAPORE

1972 FESTIVALS

No Wmk



Chinese New Year



Deepavali



Hari Raya



Christmas

Issued on 9th August 1972 to mark the Festivals of Singapore

1972 YOUTH SERIES

No Wmk



Science and technology



Extra-mural activities



Multi-racial society

Issued on 1st October 1972 to honour the Youth Series of Singapore

1972 SHIPPING SERIES

No Wmk



Neptune Ruby



Maria Rickmers



Chinese Junk

Issued on 17th December 1972 to commemorate the Shipping Industry of Singapore

SINGAPORE

1972 COIN SERIES

No Wmk



K. George V 1c coin



\$1 coin of 1969



\$150 Gold coin of 1969

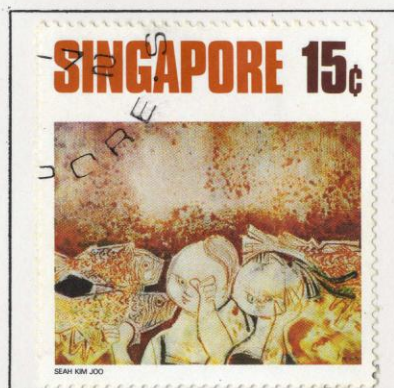
Issued on 4th June 1972 for the Coin Series 1972

1972 ART SERIES

No Wmk



Complementary Force



Moon Festival



Gibbons



Rhythm in Blue

Issued on 9th July 1972 for the Contemporary Art Series 1972

SINGAPORE

1973 NEW DEFINITIVES - PART I

No Wmk



1c (*Agave angustifolia marginata*), 5c (*Coleus blumei*), 10c (*Vinca rosea*),
15c (*Helianthus angustifolius*), 20c (*Licuala grandis*), 25c (*Wedelia trilobata*),
35c (*Chrysanthemum frutescens*), 50c (*Costus malortieanus*), 75c (*Gerbera jamesonii*)

Issued on 30th September, 1973

1973 NEW DEFINITIVES - PART II

No Wmk



Mangosteen

Jackfruit

Coconut

Pineapple

Issued on 1st November, 1973



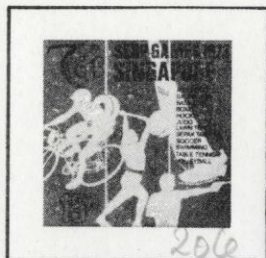
SINGAPORE

1973 7TH SEAP GAMES

No Wmk



Running, Judo and Boxing



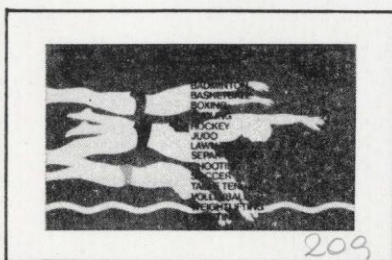
Cycling, Yachting, Weightlifting and Shooting



Balls used in various Sports



Table Tennis Bat, Shuttlecock and Hockey Stick



Swimming



National Stadium

Issued on 1st September, 1973 to commemorate the 7th South East Asia Peninsular Games in Singapore

1973 ANIMAL SERIES

No Wmk



Animals in the Zoological Gardens

Issued on 16th December, 1973 to mark the opening of the Singapore Zoological Gardens



SINGAPORE

1973 PROSPERITY THROUGH QUALITY AND RELIABILITY CAMPAIGN

No Wmk



P. Q. R. Emblems and Slogans

Issued on 25th February, 1973 to mark "Prosperity Through Quality and Reliability" Campaign

1973 SINGAPORE LANDMARKS

No Wmk



Jurong Bird Park



National Theatre



City Hall



Fullerton Building
and Singapore River

Issued on 29th April, 1973



SINGAPORE

1973 AVIATION SERIES

No Wmk



Aircraft Tail-fins



Logo and Routes



Logo on Tail-fin

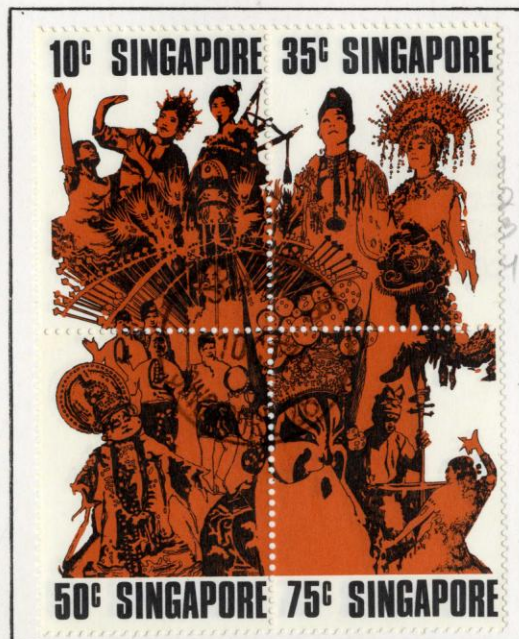


Globe

Issued on 24th June, 1973

1973 NATIONAL DAY

No Wmk



Singapore Cultural Traditions

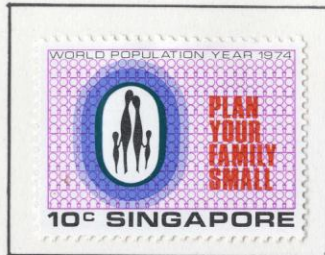
Issued on 9th August, 1973 to commemorate the National Day



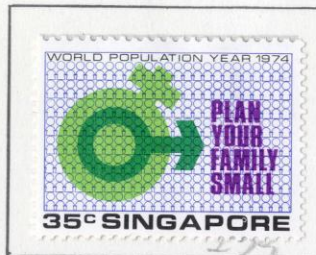
SINGAPORE

1974 NATIONAL DAY

No Wmk



Family Emblem



Male & Female Symbols



World Population map

Issued on 9th August, 1974 to mark the National Day and World Population Year

1974 CHILDREN'S DAY

No Wmk



Tree and Sun



My Daddy and Mummy



A Dump Truck



My Aunt

Issued on 1st October, 1974 to mark the Children's Day

COPYRIGHT

SINGAPORE

1974 FISH SERIES – TROPICAL FISHES (GUPPIES)

No Wmk



Multicolour

Half Black

Multicolour

Black

Issued on 21st April, 1974 for the Fish Series

1974 9TH ASIA-PACIFIC SCOUT CONFERENCE

No Wmk



Scout Badge within '9'

Issued on 9th June, 1974 to mark the 9th Asia-Pacific Scout Conference

1974 UPU CENTENARY

No Wmk



UPU Emblem and Multiple 'Centenary'

Issued on 7th July, 1974 to mark the centenary of the Universal Postal Union

COPYRIGHT



SINGAPORE

1975 NATIONAL DAY

No Wmk



Homes & Gardens



Shipping & Shipbuilding



Communications & Technology



Trade, Commerce & Industry

Issued on 9th August, 1975 to mark the 10th Anniversary of National Day

1975 BIRD SERIES

No Wmk



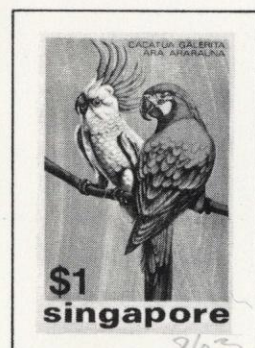
Crowned Cranes



Great Hornbill



Kingfishers



Cockatoos

Issued on 5th October, 1975

1975 INTERNATIONAL WOMEN'S YEAR

No Wmk



"Equality, Development & Peace"

Issued on 7th December, 1975 to mark the International Women's Year

COPYRIGHT



SINGAPORE

1975 SCENIC SERIES

No Wmk



Street Scene



Singapore River



Kelong

Issued on 26th January, 1975

1975 PORTS AND HARBOURS SERIES

No Wmk



Lightering Crafts



Conventional Ship



Oil Tanker



Container Ship

Issued on 10th March, 1975 to mark the 9th International Association of Ports and Harbours Conference in Singapore

1975 SCIENCE AND INDUSTRY SERIES

No Wmk



Sentosa Earth Stations



Oil Refineries



Medical Sciences

Issued on 29th June, 1975 to mark Science and Industry

SINGAPORE

1976 YOUTH FESTIVAL

No Wmk



Festival Symbol
and Band



Festival Symbol
and Athletes



Festival Symbol
and Dancers

Issued on 9th August, 1976 to mark the 10th Anniversary
of Singapore Youth Festival

1976 ART SERIES

No Wmk



Paintings of Old Singapore

Issued on 14th November 1976,

Printed on Fluorescent Marked Paper

1976 PERIOD BRIDAL COSTUMES

No Wmk



Chinese Bride



Indian Bride



Malay Bride

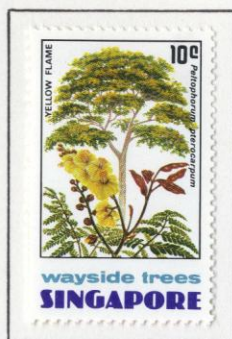
Issued on 19th December, 1976



SINGAPORE

1976 WAYSIDE TREES

No Wmk



Yellow Flame



Cabbage Tree



Rose of India



Variegated
Coral Tree

Issued on 18th April, 1976

1976 ORCHIDS

No Wmk



Arachnis
hookeriana X Vanda
Hilo Blue



Arachnis
Maggie
Oei X Vanda
insignis



Arachnis
Maggie
Oei X Vanda
Rodman



Arachnis
hookeriana X Vanda
Dawn Nishimura

Issued on 20th June, 1976

COPYRIGHT

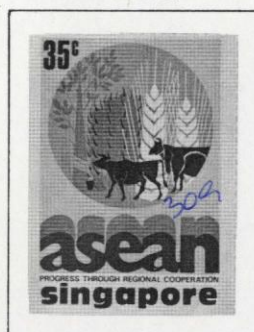
SINGAPORE

1977 10TH ANNIV. OF THE ASSOCIATION OF SOUTH EAST ASIAN NATIONS

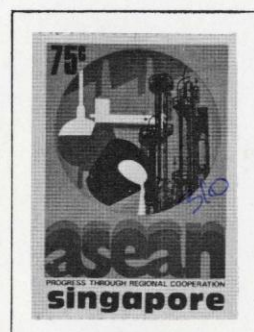
No Wmk



Flags of ASEAN Countries



Agriculture



Industry

Issued on 8th August, 1977 to mark the 10th Anniversary of the Association of South East Asian Nations (ASEAN)

1977 CHILDREN'S ART

No Wmk



Bus Stop



Chingay Procession



Playground

Issued on 1st October, 1977

1977 OPENING OF THE SINGAPORE SCIENCE CENTRE

No Wmk



Life Sciences



Physical Sciences



Science & Technology



Singapore Science Centre

Issued on 10th December, 1977 to mark the opening of the Singapore Science Centre

COPYRIGHT



SINGAPORE

1977 10TH ANNIV. OF NATIONAL SERVICE

No Wmk



Radar, Missile & Soldiers



Tank & Soldiers



Soldiers, Wireless Operators
Pilot & Aircraft

Issued on 12th March, 1977 to mark the 10th Anniversary
of National Service

1977 LABOUR DAY

No Wmk



Shipbuilding



Building
Construction



Road
Construction

Issued on 1st May, 1977 to mark Labour Day

1977 CENTENARY OF THE POST OFFICE SAVINGS BANK

No Wmk



Banknotes &
Keyhole



On-Line Banking
Service



GIRO Service

Issued on 16th July, 1977 to mark the
Centenary of the Post Office Savings Bank

COPYRIGHT



SINGAPORE

10TH ANNIV. OF NEPTUNE ORIENT LINES

No Wmk



Neptune Spinel



Neptune Aries



Anro Temasek



Neptune Pearl

Issued on 18th November, 1978 to mark the 10th Anniversary of the Neptune Orient Lines

AVIATION SERIES

No Wmk



Concorde

Boeing 747B

Vickers-Vimy

Wright Brother Flyer I

Issued on 16th December, 1978 in the Aviation Series

1978 POSTAGE DUE

No Wmk



Issued on 25th September, 1978 Printed in Chalky Paper



SINGAPORE

1978 NATIONAL MONUMENTS

No Wmk



Hajjah Fatimah Mosque



Sri Mariamman Temple



Thian Hock Keng Temple



Armenian Church

MINIATURE SHEET

No Wmk

Singapore National Monuments



Issued on 9th August, 1978 to commemorate the Singapore National Monuments



SINGAPORE

1978 PARKS AND GARDENS



Lake, trees and buildings at sunset

No Wmk



Twilight Landscape with trees



Park

Issued on 22nd April, 1978.

1978 SINGING BIRDS

No Wmk



Red-whiskered Bulbul



White Eye



White Rumped Shama



White Crested Laughing Thrush & China Thrush

Issued on 1st July, 1978

1978 ASEAN SUBMARINE CABLE NETWORK

No Wmk



Map of Cable route

Issued on 3rd October, 1978 to mark the Inauguration of the Philippines – Singapore Submarine Cable



SINGAPORE

1979 100 YEARS OF TELEPHONE SERVICE

No Wmk



Old Telephone and Overhead Telephone View



Telephone Dial and Map of Singapore



Outline of Telephone and Office Buildings



Ultra Modern Telephone Service

Issued on 9th August, 1979 to commemorate 100 years of Telephone Service

1979 INTERNATIONAL YEAR OF THE CHILD

No Wmk



Children's Drawings

Issued on 10th November, 1979 to commemorate the "International Year of the Child 1979"

120TH ANNIVERSARY OF BOTANIC GARDENS

No Wmk



Rubber Trees



Hybridisation



Orchid Breeding

Issued on 15th December, 1979 to mark the 120th Anniversary of Botanic Gardens in Singapore

COPYRIGHT



SINGAPORE

1979 METRICATION

No Wmk



Distance Marker



Tape Measure



Weighing Scale

Issued on 24th February, 1979 to mark the Final Stage of the Metric Conversion in the Retail Trade

1979 ORCHIDS OF SINGAPORE

No Wmk



Vanda Hybrid

Issued on 14th April, 1979 depicting the Vanda Orchids Hybrids

1979 NEW POSTAL CODE SYSTEM

No Wmk



Envelope and Killiney
Road Post Office Code



Envelope and G.P.O. Code

Issued on 1st July, 1979 to mark the Introduction of the New 4-Digits Postal Code System

COPYRIGHT



SINGAPORE

1980 "LONDON 1980" INTERNATIONAL STAMP EXHIBITION

No Wmk



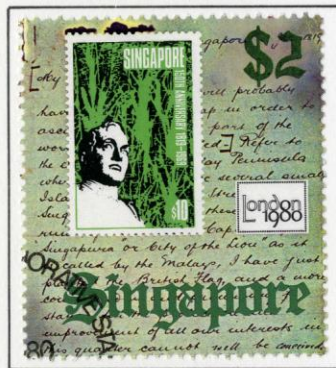
1½ c Straits Settlements
Stamp of 1867



\$500 Straits Settlements
Stamp of 1906



\$2 Stamp of 1948



\$10 Stamp of 1969

Issued on 6th May, 1980 to mark the "London 1980" International Stamp Exhibition

1980 25TH ANNIV. OF CENTRAL PROVIDENT FUND BOARD

No Wmk



"Keys to Retirement
Benefits"



"Savings for
Home Ownership"



"Savings for
Old-Age"

Issued on 1st July, 1980 to mark the 25th Anniversary of the Central Provident
Fund Board

COPYRIGHT

SINGAPORE

1980 ASEAN SUBMARINE CABLE NETWORK

No Wmk

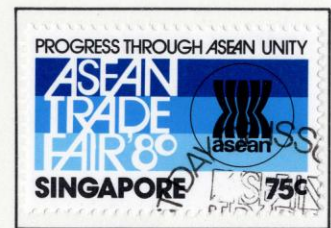
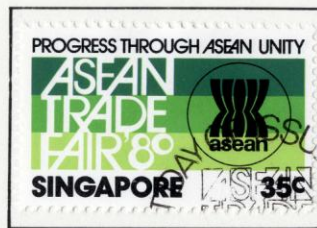
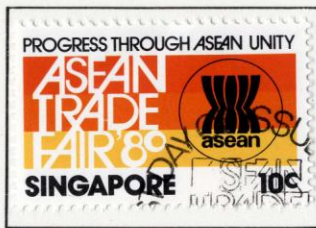


Map of Cable Route

Issued on 8th August, 1980 to mark the Inauguration of the Indonesia – Singapore Submarine Cable Link

1980 ASEAN TRADE FAIR '80

No Wmk



"Progress through Asean Unity"

Issued on 3rd October, 1980 to mark the Asean Trade Fair '80

1980 FLOWERS OF SINGAPORE

No Wmk



Ixora



Allamanda



Sky Vine



Bougainvillea

Issued on 8th November, 1980 to mark the 10th Tree Planting Day

COPYRIGHT



SINGAPORE

1981 DEFINITIVE SURCHARGED 10c ON 4c

Wmk Block CA



Six-banded Barb

Issued on 4th March, 1981

1981 INTERNATIONAL YEAR OF DISABLED PERSONS

No Wmk



The Right to Environmental Aids



The Right to Social Integration



The Right to Education



The Right to Work

Issued on 24th November, 1981 to mark the International Year of Disabled Persons

1981 SINGAPORE CHANGI AIRPORT

No Wmk



Control Tower and Passenger Terminal Building

Issued on 29th December, 1981 to mark The opening of the Changi Airport

COPYRIGHT



SINGAPORE

1981 10TH ANNIV. OF THE MONETARY AUTHORITY OF SINGAPORE

No Wmk

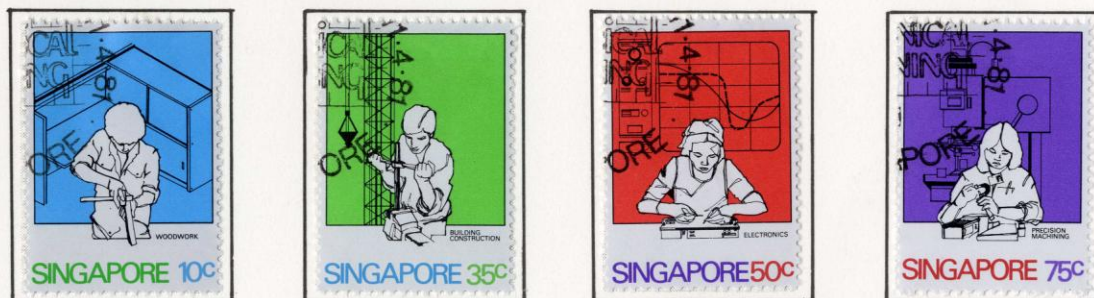


Currency Symbols

Issued on 24th January 1981 to mark the 10th Anniversary of the Monetary Authority of Singapore

1981 TECHNICAL TRAINING

No Wmk



Woodwork

Building
Construction

Electronics

Precision Machinery

Issued on 11th April, 1981 to highlight the importance of Technical Training

1981 "SPORTS FOR ALL"

No Wmk



Figures representing various sports

Issued on 25th August, 1981 on the theme of "Sports for All"

COPYRIGHT