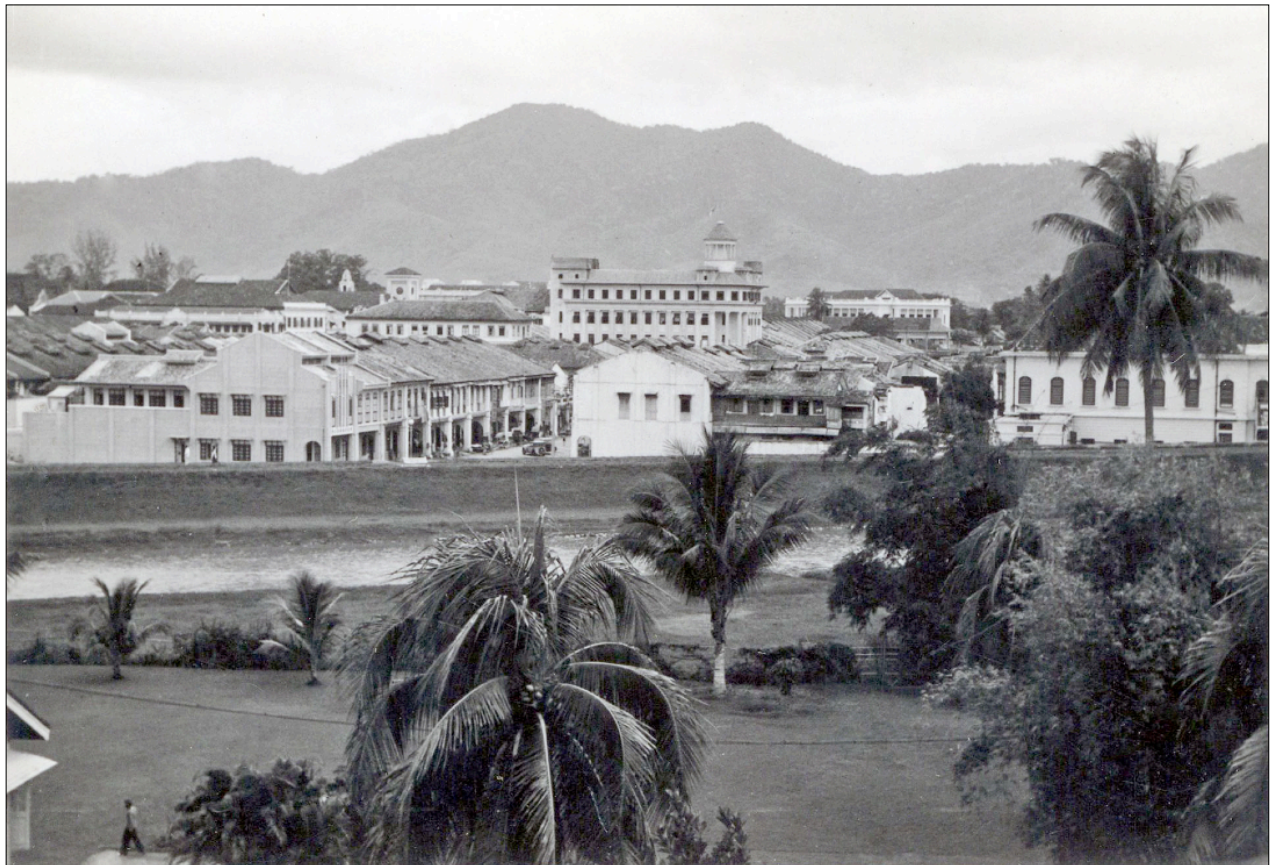


## A view of Ipoh

Analysis for *ipohWorld* performed by *Ipoh Remembered*

All rights reserved © March 2018

Original photograph: 20160611-005.jpg



### Vantage point

In the background the Kledang Range; in the centre the unmistakable **Hongkong & Shanghai Bank building** with its circular tower; towards the left the **Birch Memorial Clock Tower** and the **Straits Trading building** with its square tower; towards the right the **Supreme Court building**; and then the lay of the Kinta River; and finally the tree-tops in the foreground – all these things suggest that the photograph was taken from an elevated point near the east bank of the river.

Looking at the map below, it is evident that there is only one point in Ipoh from which the photograph could have been taken: the top of the watch-tower in the **Fire Station compound** on Brewster Road.



## Field of view

On the right side of the map is the watch-tower in the **Fire Station compound**. From there we draw a first line of sight that corresponds to the right edge of the photograph. This line of sight (shown as **Line A** in the map) runs parallel to Brewster Road.

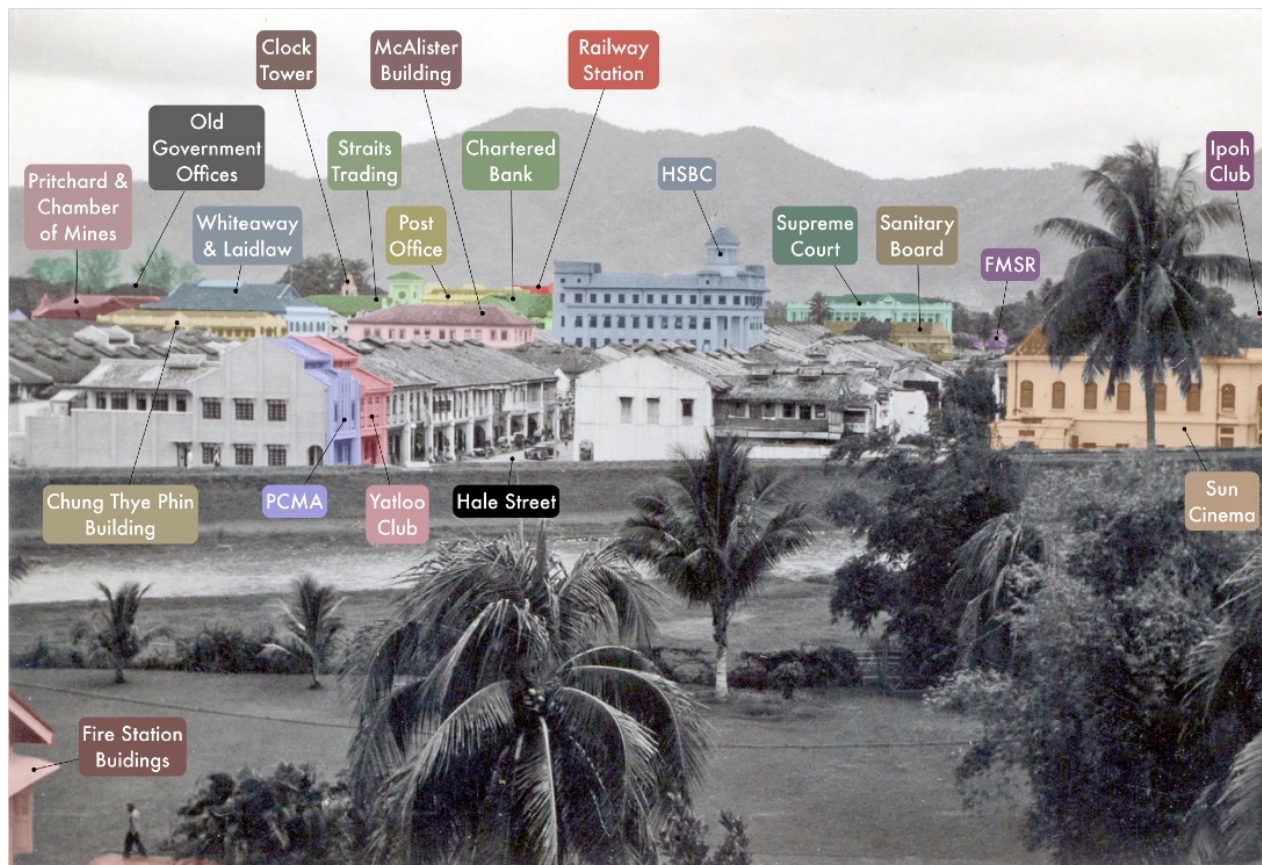
Then, sweeping down from **Line A** through an angle of about 45 degrees, we draw another line of sight on the map (**Line F**). On both the map and the photograph, this line of sight extends from the watch-tower through a point at the river end of Hale Lane.

Between **Line A** and **Line F** on the map is the complete field of view captured in the photograph. Not everything within the field of view is actually visible from our vantage point – some things are obscured by structures or trees – but nothing outside the field of view can be seen in the photograph.

## Annotations

In the annotated photograph presented below, primary landmarks are shown, along with a number of less easily identified structures (colour added to help with resolution of features).

When we look straight ahead along the right edge of the photograph, we are looking in the direction of **Line A** in the map. Directly in front of us with its roof obscured by a prominent coconut tree is the **Sun Cinema** (originally called the Oriental, as indicated in the map).



As we sweep left across the photograph (now looking down **Line C** in the map), we see the **Supreme Court building** and, in front of it, the **Sanitary Board offices** — partially obscured by a tree-top and by shop-houses that sit on the corner of **Hale Street** and Belfield Street. (Note that even today in 2018, city government still occupies a building where its ancestor, the Sanitary Board, used to meet.)

Returning to the river bank (and looking at either the photograph or the map), we can walk up **Hale Street**; through the intersection with Belfield Street (where the **Hongkong & Shanghai Bank building** rises); along the southern edge of the Padang (visible in the map); until we arrive at the **Sanitary Board offices**. Another way to reach the Padang would be to fly along Line A on the map, over the coconut tree, over the **Sun Cinema**, and across Belfield Street.

Back at the corner of **Hale Street** and Belfield Street, if we turn left (or south), then, after passing the **Hongkong & Shanghai Bank building** on our right, we arrive at the **McAlister building** (often called the De Silva building), also on our right. Then, on the other side of **Station Road**, we see the **Chung Thye Phin building**, also on our right.

If we then turn right (or west) on **Station Road**, we pass the **Whiteaway & Laidlaw building** on our left; the **Straits Trading building** also on our left; the **Chartered Bank building** on our right; the **Birch Memorial Clock Tower** on our left (*cf.* **Line E** in the map); the Perak Hydro building on our right (not visible in the photograph); and the **Post Office and Town Hall building** on our left.

Going further along Station Road we come to Club Road (not visible) with the **Railway Station** right in front of us. Indeed, part of the Station's peaked roof is visible in the photograph, along with a sliver of its

main dome, the rest of the dome being obscured by the left edge of the **Hongkong & Shanghai Bank building**. Why is the **Railway Station** visible in the photograph? Because, as we can see on the map, there is a line of sight (**Line D**) that skirts the back corner of the **Hongkong & Shanghai Bank** building and proceeds towards the mid-line of the **Railway Station**.

Still at the corner of Station Road and Club Road, turning right on Club Road, we pass on our left a few small structures belonging to the FMS Railways: these are marked **FMSR** in the photograph, and they are visible via **Line B** on the map.

Continuing on Club Road we reach the **Ipoh Club** on our right, its southern-most facilities visible at the extreme right of the photograph, on the high ground above the Padang. (**Line A** on the map confirms that we should be able to see this part of the **Ipoh Club** compound in the photograph.)

Returning to **Station Road**, looking behind the **Whiteaway & Laidlaw building** we see a block along Post Office Road that includes the **Pritchard building** at the near end, a former Times of Malaya building (not visible), and the **FMS Chamber of Mines building** at the far end. Also visible at the far end is a clump of trees; these surround the **Old Government Offices** (not visible in the photograph).

In the lower-left corner of the photograph, we see one of the smaller buildings that is located in the **Fire Station compound**.

And finally, going back to **Hale Street**, we see the premises of the **Perak Chinese Mining Association** (marked **PCMA** in the photograph) and, adjacent to it, the **Yatloo Club building**.

### Estimating the date: 1937-1941

**1937:** The Perak Chinese Mining Association was founded in 1935 but did not resolve to construct its own premises until 1937. Two shop-lots at the river end of **Hale Street** were purchased: the business side of the Association used one and the other was given over to the recreational side (known as the Yatloo Club). Both buildings are visible in the photograph (and, as of this writing, both still exist on **Hale Street**).

**1941:** In December, 1941 the Japanese dropped bombs over Ipoh, damaging a number of structures, including the raised *façade* of the **Pritchard building**. The *façade*, which appears intact in the photograph, was never properly restored after the war. In the late 1950s Pritchard's went out of business altogether and its Ipoh building – indeed, almost that entire block – was torn down to make way for new construction.

Every building visible in the photograph would have been there in the period 1937-1941, including the watch-tower in the **Fire Station compound**. The contour of the river banks suggests that post-1927 flood-management measures were in place. The cars and rickshas parked on **Hale Street** are consistent with a pre-1941 scene, and the general condition of the buildings, too, suggests that Japanese bombs have not yet fallen. The absence of transmission towers on the hills is consistent as well.